

Anti-ALDH1A1 antibody [5A11] (STJ97824)

STJ97824

GENERAL INFORMATION

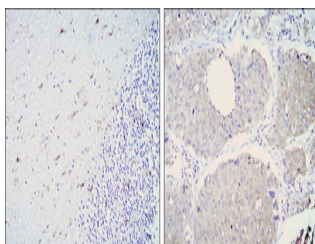
Product Type	Primary antibodies
Short Description	Mouse monoclonal antibody anti-Aldehyde Dehydrogenase 1a1 is suitable for use in Western Blot, Immunohistochemistry, Immunofluorescence and ELISA research applications.
Applications	WB, IHC-P, IF-P, ELISA
Host/Source	Mouse
Reactivity	Human

PRODUCT PROPERTIES

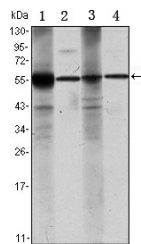
Clonality	Monoclonal
Clone ID	5A11
Concentration	
Conjugation	Unconjugated
Purification	The antibody was isolated from ascitic fluid by immunoaffinity chromatography using antigens coupled to agarose beads.
Dilution Range	WB 1:500-1:2000 IHC 1:200-1:1000 ELISA 1:10000
Formulation	Ascitic fluid, 0.03% Sodium Azide, 0.5% BSA, 50% Glycerol.
Isotype	IgG1
Storage Instruction	Store at -20°C for up to 1 year from the date of receipt, and avoid repeat freeze-thaw cycles.

TARGET INFORMATION

Gene ID	216
Gene Symbol	ALDH1A1
Uniprot ID	AL1A1_HUMAN
Immunogen	Purified recombinant fragment of human ALDH1A1 expressed in E.coli.
Immunogen Region	
Specificity	ALDH1A1 monoclonal antibody (Aldehyde Dehydrogenase 1a1) binds to endogenous Aldehyde Dehydrogenase 1a1.
Immunogen Sequence	



Immunohistochemistry analysis of paraffin-embedded cerebellum tissues (left) and lung cancer (right) with DAB staining using ALDH1A1 monoclonal antibody.



Western blot analysis using ALDH1A1 monoclonal antibody against Raji (1), Jurkat (2), THP-1 (3) and K562 (4) cell lysate.

This product is suitable for in-vitro studies under the RESEARCH USE ONLY [RUO] licence. This product must not be used as for diagnostic or other medical purposes.
St John's Laboratory Ltd, Knowledge Dock Business Centre, University Way, London, E16 2RD | Tel: 0208 223 3081