

## Anti-ALB antibody [2H3D1/8F6F9] (STJ97823)

STJ97823

### GENERAL INFORMATION

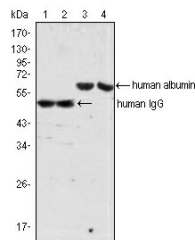
<b>Product Type</b>	Primary antibodies
<b>Short Description</b>	Mouse monoclonal antibody anti-Albumin is suitable for use in Western Blot and ELISA research applications.
<b>Applications</b>	WB, ELISA
<b>Host/Source</b>	Mouse
<b>Reactivity</b>	Human

### PRODUCT PROPERTIES

<b>Clonality</b>	Monoclonal
<b>Clone ID</b>	2H3D1/8F6F9
<b>Concentration</b>	
<b>Conjugation</b>	Unconjugated
<b>Purification</b>	The antibody was isolated from ascitic fluid by immunoaffinity chromatography using antigens coupled to agarose beads.
<b>Dilution Range</b>	WB 1:500-1:2000 ELISA 1:10000
<b>Formulation</b>	Ascitic fluid, 0.03% Sodium Azide, 0.5% BSA, 50% Glycerol.
<b>Isotype</b>	IgG1
<b>Storage Instruction</b>	Store at -20°C for up to 1 year from the date of receipt, and avoid repeat freeze-thaw cycles.

### TARGET INFORMATION

<b>Gene ID</b>	213
<b>Gene Symbol</b>	ALB
<b>Uniprot ID</b>	ALBU_HUMAN
<b>Immunogen</b>	Human sera albumin.
<b>Immunogen Region</b>	
<b>Specificity</b>	ALB monoclonal antibody (Albumin) binds to endogenous Albumin.
<b>Immunogen Sequence</b>	



Western blot analysis using ALB monoclonal antibody (lane 3, 4) and Human IgG monoclonal antibody (lane 1, 2) against human serum (lane 1, 3) and plasma (lane 2, 4).