

Anti-AIFM1 antibody [4E7] (STJ97819)

STJ97819

GENERAL INFORMATION

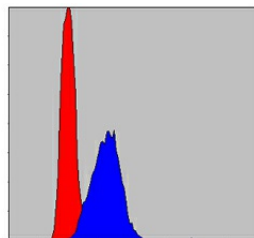
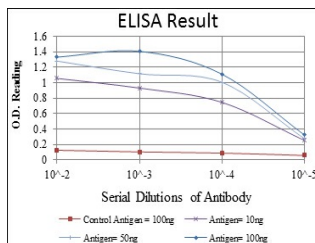
Product Type	Primary antibodies
Short Description	Mouse monoclonal antibody anti-Apoptosis-Inducing Factor 1-Mitochondrial is suitable for use in Western Blot, Immunohistochemistry, Immunofluorescence, Immunocytochemistry, Flow Cytometry and ELISA research applications.
Applications	WB, IHC-P, IF, ICC, FC, ELISA
Host/Source	Mouse
Reactivity	Human, Mouse, Rat, Monkey

PRODUCT PROPERTIES

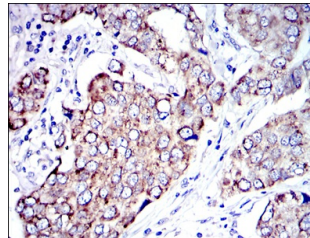
Clonality	Monoclonal
Clone ID	4E7
Concentration	
Conjugation	Unconjugated
Purification	The antibody was isolated from ascitic fluid by immunoaffinity chromatography using antigens coupled to agarose beads.
Dilution Range	WB 1:500-1:2000 IHC 1:200-1:1000 IF 1:200-1:1000 FC 1:200-1:400 ELISA 1:10000
Formulation	Ascitic fluid, 0.03% Sodium Azide, 0.5% BSA, 50% Glycerol.
Isotype	IgG2b
Storage	Store at -20°C for up to 1 year from the date of receipt, and avoid repeat freeze-thaw cycles.
Instruction	

TARGET INFORMATION

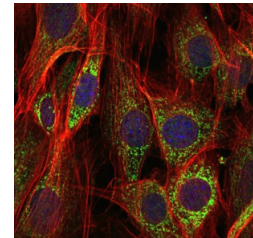
Gene ID	9131
Gene Symbol	AIFM1
Uniprot ID	AIFM1_HUMAN
Immunogen	Purified recombinant fragment of human AIF-M1 expressed in E.coli.
Immunogen Region	
Specificity	AIFM1 monoclonal antibody (Apoptosis-Inducing Factor 1-Mitochondrial) binds to endogenous Apoptosis-Inducing Factor 1-Mitochondrial.
Immunogen Sequence	



Flow cytometric analysis of HepG2 cells using AIF-M1 monoclonal antibody (blue) and negative control (red).



Immunohistochemistry analysis of paraffin-embedded human breast cancer tissues with DAB staining using AIF-M1 monoclonal antibody.



Immunofluorescence analysis of NIH/3T3 cells using AIF-M1 monoclonal antibody (green). Blue: DRAQ5 fluorescent DNA dye. Red: Actin filaments have been labeled with Alexa Fluor-555 phalloidin.

This product is suitable for in-vitro studies under the RESEARCH USE ONLY [RUO] licence. This product must not be used as for diagnostic or other medical purposes.
St John's Laboratory Ltd, Knowledge Dock Business Centre, University Way, London, E16 2RD | Tel: 0208 223 3081