

Anti-PDGFR α antibody (1010-1090) [7A3] (STJ97793)

STJ97793

GENERAL INFORMATION

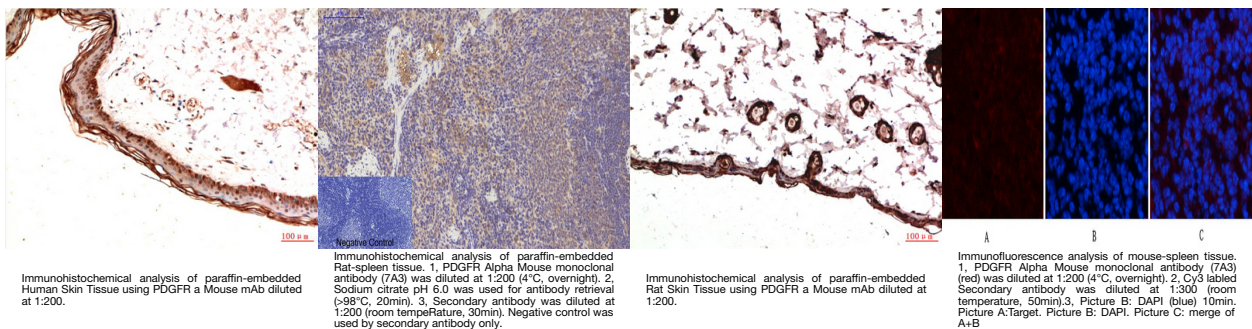
Product Type	Primary antibodies
Short Description	Mouse monoclonal antibody anti-Platelet-Derived Growth Factor Receptor Alpha (1010-1090) is suitable for use in Immunofluorescence, Immunocytochemistry and Immunohistochemistry research applications.
Applications	IF, ICC, IHC-P
Host/Source	Mouse
Reactivity	Human, Rat, Mouse

PRODUCT PROPERTIES

Clonality	Monoclonal
Clone ID	7A3
Concentration	1 mg/mL
Conjugation	Unconjugated
Purification	The antibody was isolated from ascitic fluid by immunoaffinity chromatography using antigens coupled to agarose beads.
Dilution	IF 1:50-200
Range	IHC 1:100-200
Formulation	PBS, 50% Glycerol, 0.5% BSA and 0.02% Sodium Azide.
Isotype	IgG1
Storage	Store at -20°C for up to 1 year from the date of receipt, and avoid repeat freeze-thaw cycles.
Instruction	

TARGET INFORMATION

Gene ID	5156
Gene Symbol	PDGFRA
Uniprot ID	PGFRA_HUMAN
Immunogen	Synthetic peptide of PDGFR Alpha at amino acid range of 1010-1090
Immunogen Region	1010-1090
Specificity	PDGFRA monoclonal antibody (Platelet-Derived Growth Factor Receptor Alpha) binds to endogenous Platelet-Derived Growth Factor Receptor Alpha at the amino acid region 1010-1090.
Immunogen Sequence	



Immunohistochemical analysis of paraffin-embedded Human Skin Tissue using PDGFR α Mouse mAb diluted at 1:200.

Immunohistochemical analysis of paraffin-embedded Rat-spleen tissue. 1. PDGFR α Mouse monoclonal antibody (7A3) was diluted at 1:200 (4°C, overnight). 2. Sodium citrate pH 6.0 was used for antibody retrieval (>98°C, 20min). 3. Secondary antibody was diluted at 1:200 (room temperature, 30min). Negative control was used by secondary antibody only.

Immunohistochemical analysis of paraffin-embedded Rat Skin Tissue using PDGFR α Mouse mAb diluted at 1:200.

Immunofluorescence analysis of mouse-spleen tissue. 1. PDGFR α Mouse monoclonal antibody (7A3) (red) was diluted at 1:200 (4°C, overnight). 2. Cy3 labeled Secondary antibody was diluted at 1:300 (room temperature, 50min). 3. Picture B: DAPI (blue) 10min. Picture A: Target. Picture B: DAPI. Picture C: merge of A+B

This product is suitable for in-vitro studies under the RESEARCH USE ONLY [RUO] licence. This product must not be used as for diagnostic or other medical purposes.
 St John's Laboratory Ltd, Knowledge Dock Business Centre, University Way, London, E16 2RD | Tel: 0208 223 3081