

## Anti-MLKL antibody [8H7] (STJ97792)

STJ97792

### GENERAL INFORMATION

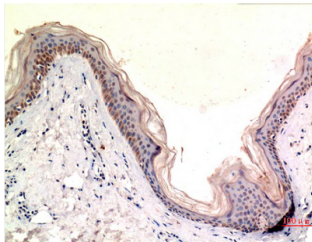
<b>Product Type</b>	Primary antibodies
<b>Short Description</b>	Mouse monoclonal antibody anti-Mixed Lineage Kinase Domain-Like Protein is suitable for use in Immunohistochemistry and Immunofluorescence research applications.
<b>Applications</b>	IHC-P, IF-P
<b>Host/Source</b>	Mouse
<b>Reactivity</b>	Human

### PRODUCT PROPERTIES

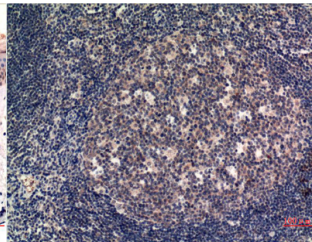
<b>Clonality</b>	Monoclonal
<b>Clone ID</b>	8H7
<b>Concentration</b>	1 mg/mL
<b>Conjugation</b>	Unconjugated
<b>Purification</b>	The antibody was isolated from ascitic fluid by immunoaffinity chromatography using antigens coupled to agarose beads.
<b>Dilution Range</b>	IHC 1:100-200
<b>Formulation</b>	PBS, 50% Glycerol, 0.5% BSA and 0.02% Sodium Azide.
<b>Isotype</b>	IgG1
<b>Storage Instruction</b>	Store at -20°C for up to 1 year from the date of receipt, and avoid repeat freeze-thaw cycles.

### TARGET INFORMATION

<b>Gene ID</b>	197259
<b>Gene Symbol</b>	MLKL
<b>Uniprot ID</b>	MLKL_HUMAN
<b>Immunogen</b>	Synthetic peptide of MLKL
<b>Immunogen Region</b>	
<b>Specificity</b>	MLKL monoclonal antibody (Mixed Lineage Kinase Domain-Like Protein) binds to endogenous Mixed Lineage Kinase Domain-Like Protein.
<b>Immunogen Sequence</b>	



Immunohistochemical analysis of paraffin-embedded Human Skin Tissue using MLKL Mouse mAb diluted at 1:200.



Immunohistochemical analysis of paraffin-embedded Human Tonsil Tissue using MLKL Mouse mAb diluted at 1:200.

This product is suitable for in-vitro studies under the RESEARCH USE ONLY [RUO] licence. This product must not be used as for diagnostic or other medical purposes.  
 St John's Laboratory Ltd, Knowledge Dock Business Centre, University Way, London, E16 2RD | Tel: 0208 223 3081