

Anti-phospho-MLKL (S358) antibody [6B4] (STJ97777)

STJ97777

GENERAL INFORMATION

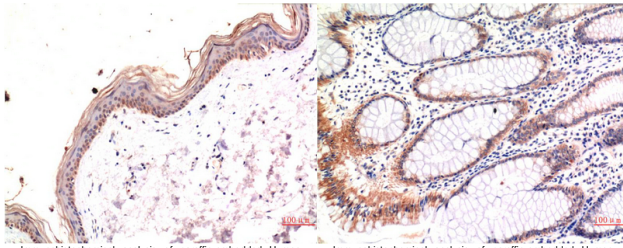
Product Type	Primary antibodies
Short Description	Mouse monoclonal anti-phospho-MLKL (S358) antibody is suitable for use in Immunohistochemistry.
Background	
Applications	IHC-P
Host/Source	Mouse
Reactivity	Human

PRODUCT PROPERTIES

Clonality	Monoclonal
Clone ID	6B4
Concentration	1 mg/ml
Conjugation	Unconjugated
Purification	The antibody was affinity-purified from mouse ascites by affinity-chromatography using a specific immunogen.
Dilution Range	WB 1:500-1:2000 IHC-p 1:50-200
Formulation	Liquid in PBS containing 50% glycerol, 0.5% BSA and 0.02% sodium azide.
Isotype	IgG1
Storage Instruction	Store at -20°C, and avoid repeat freeze-thaw cycles.

TARGET INFORMATION

Gene ID	197259
Gene Symbol	MLKL
Uniprot ID	MLKL_HUMAN
Immunogen	synthetic peptide derived from phospho-MLKL (S358)
Immunogen Region	
Specificity	phospho-MLKL (S358) protein detects endogenous levels of MLKL
Immunogen Sequence	



Immunohistochemical analysis of paraffin-embedded Human Skin Tissue using Phospho-MLKL S358 Mouse mAb diluted at 1:200.

Immunohistochemical analysis of paraffin-embedded Human Colon Carcinoma Tissue using Phospho-MLKL S358 Mouse mAb diluted at 1:200.

This product is suitable for in-vitro studies under the RESEARCH USE ONLY [RUO] licence. This product must not be used as for diagnostic or other medical purposes.
St John's Laboratory Ltd, Knowledge Dock Business Centre, University Way, London, E16 2RD | Tel: 0208 223 3081 | Fax: 0207 681 2580