

Anti-SMAD3 antibody (350-430) [4C9] (STJ97772)

STJ97772

GENERAL INFORMATION

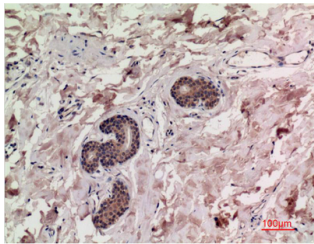
Product Type	Primary antibodies
Short Description	Mouse monoclonal antibody anti-Mothers Against Decapentaplegic Homolog 3 (350-430) is suitable for use in Western Blot, Immunohistochemistry and Immunofluorescence research applications.
Applications	WB, IHC-P, IF-P
Host/Source	Mouse
Reactivity	Human, Rat, Mouse

PRODUCT PROPERTIES

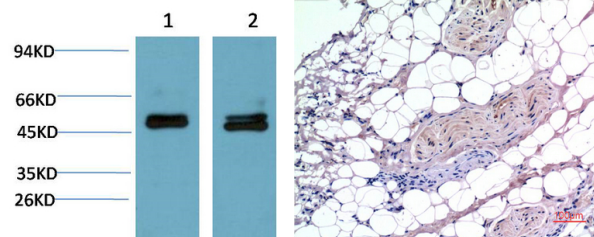
Clonality	Monoclonal
Clone ID	4C9
Concentration	1 mg/mL
Conjugation	Unconjugated
Purification	The antibody was isolated from ascitic fluid by immunoaffinity chromatography using antigens coupled to agarose beads.
Dilution	WB 1:1000-2000
Range	IHC 1:100-200
Formulation	PBS, 50% Glycerol, 0.5% BSA and 0.02% Sodium Azide.
Isotype	IgG1
Storage	Store at -20°C for up to 1 year from the date of receipt, and avoid repeat freeze-thaw cycles.
Instruction	

TARGET INFORMATION

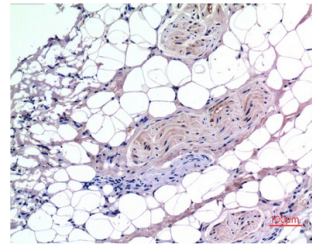
Gene ID	4088
Gene Symbol	SMAD3
Uniprot ID	SMAD3_HUMAN
Immunogen	Synthetic peptide of Smad3 at amino acid range of 350-430
Immunogen Region	350-430
Specificity	SMAD3 monoclonal antibody (Mothers Against Decapentaplegic Homolog 3) binds to endogenous Mothers Against Decapentaplegic Homolog 3 at the amino acid region 350-430.
Immunogen Sequence	



Immunohistochemical analysis of paraffin-embedded Human Breast Carcinoma Tissue using Smad3 Mouse mAb diluted at 1:200.



Western blot analysis of 1) Mouse Brain Tissue Lysate, 2) Rat Brain Tissue Lysate using Smad3 Mouse mAb diluted at 1:2000.



Immunohistochemical analysis of paraffin-embedded Human Liver Carcinoma Tissue using Smad3 Mouse mAb diluted at 1:200.

This product is suitable for in-vitro studies under the RESEARCH USE ONLY [RUO] licence. This product must not be used as for diagnostic or other medical purposes.
 St John's Laboratory Ltd, Knowledge Dock Business Centre, University Way, London, E16 2RD | Tel: 0208 223 3081