

Anti-SGK1 antibody (350-430) [4D12] (STJ97721)

STJ97721

GENERAL INFORMATION

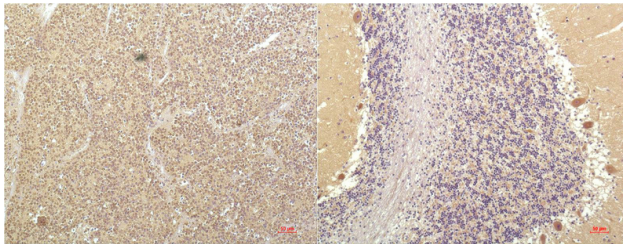
Product Type	Primary antibodies
Short Description	Mouse monoclonal antibody anti-Serine/Threonine-Protein Kinase Sgk1 (350-430) is suitable for use in Immunohistochemistry and Immunofluorescence research applications.
Applications	IHC-P, IF-P
Host/Source	Mouse
Reactivity	Human, Rat, Mouse

PRODUCT PROPERTIES

Clonality	Monoclonal
Clone ID	4D12
Concentration	1 mg/mL
Conjugation	Unconjugated
Purification	The antibody was isolated from ascitic fluid by immunoaffinity chromatography using antigens coupled to agarose beads.
Dilution Range	IHC 1:100-200
Formulation	PBS, 50% Glycerol, 0.5% BSA and 0.02% Sodium Azide.
Isotype	IgG1
Storage Instruction	Store at -20°C for up to 1 year from the date of receipt, and avoid repeat freeze-thaw cycles.

TARGET INFORMATION

Gene ID	6446
Gene Symbol	SGK1
Uniprot ID	SGK1_HUMAN
Immunogen	Synthetic peptide of SGK1 at amino acid range of 350-430
Immunogen Region	350-430
Specificity	SGK1 monoclonal antibody (Serine/Threonine-Protein Kinase Sgk1) binds to endogenous Serine/Threonine-Protein Kinase Sgk1 at the amino acid region 350-430.
Immunogen Sequence	



Immunohistochemical analysis of paraffin-embedded Human Kidney Carcinoma Tissue using SGK1 Mouse mAb diluted at 1:200.

Immunohistochemical analysis of paraffin-embedded Human Brain Tissue using SGK1 Mouse mAb diluted at 1:200.

This product is suitable for in-vitro studies under the RESEARCH USE ONLY [RUO] licence. This product must not be used as for diagnostic or other medical purposes.
 St John's Laboratory Ltd, Knowledge Dock Business Centre, University Way, London, E16 2RD | Tel: 0208 223 3081