

Anti-SSTR2 antibody (Internal) (STJ97705)

STJ97705

GENERAL INFORMATION

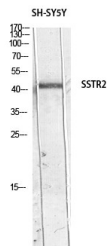
Product Type	Primary antibodies
Short Description	Rabbit polyclonal antibody anti-Somatostatin Receptor Type 2 (Internal) is suitable for use in Western Blot and ELISA research applications.
Applications	WB, ELISA
Host/Source	Rabbit
Reactivity	Human, Mouse, Rat

PRODUCT PROPERTIES

Clonality	Polyclonal
Clone ID	
Concentration	1 mg/mL
Conjugation	Unconjugated
Purification	The antibody was affinity-purified from rabbit anti-serum by affinity-chromatography.
Dilution Range	WB 1:500-1:2000 ELISA 1:10000
Formulation	PBS, 50% Glycerol, 0.5% BSA and 0.02% Sodium Azide.
Isotype	IgG
Storage Instruction	Store at -20°C for up to 1 year from the date of receipt, and avoid repeat freeze-thaw cycles.

TARGET INFORMATION

Gene ID	6752
Gene Symbol	SSTR2
Uniprot ID	SSR2_HUMAN
Immunogen	The antiserum was produced against synthesized peptide derived from the Internal region of human SSTR2 at amino acid range 220-270
Immunogen Region	Internal
Specificity	SSTR2 polyclonal antibody (Somatostatin Receptor Type 2) binds to endogenous Somatostatin Receptor Type 2 at the amino acid region Internal.
Immunogen Sequence	



Western blot analysis of SH-SY5Y lysis using SSTR2 antibody. Antibody was diluted at 1:500. Secondary antibody was diluted at 1:20000