

Anti-Acetyl-TAL1-Lys37 antibody (STJ97700)

STJ97700

GENERAL INFORMATION

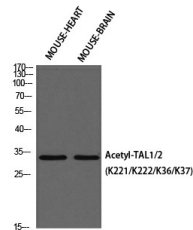
Product Type	Primary antibodies
Short Description	Rabbit polyclonal antibody anti-Acetyl-T-Cell Acute Lymphocytic Leukemia Protein 1-Lys37 is suitable for use in Western Blot and ELISA research applications.
Applications	WB, ELISA
Host/Source	Rabbit
Reactivity	Human, Mouse, Rat

PRODUCT PROPERTIES

Clonality	Polyclonal
Clone ID	
Concentration	1 mg/mL
Conjugation	Unconjugated
Purification	The antibody was affinity-purified from rabbit anti-serum by affinity-chromatography.
Dilution Range	WB 1:500-1:2000 ELISA 1:10000
Formulation	PBS, 50% Glycerol, 0.5% BSA and 0.02% Sodium Azide.
Isotype	IgG
Storage	Store at -20°C for up to 1 year from the date of receipt, and avoid repeat freeze-thaw cycles.
Instruction	

TARGET INFORMATION

Gene ID	6886
Gene Symbol	TAL1
Uniprot ID	TAL1_HUMAN
Immunogen	Synthesized acetyl-peptide derived from human TAL1/2 around the acetylation site of K221.
Immunogen Region	
Specificity	Acetyl-TAL1-Lys37 polyclonal antibody (T-Cell Acute Lymphocytic Leukemia Protein 1) binds to endogenous T-Cell Acute Lymphocytic Leukemia Protein 1.
Immunogen Sequence	



Western blot analysis of MOUSE-HEART mouse brain using Acetyl-TAL1/2 (K221/K222/K36/K37) antibody. Antibody was diluted at 1:500. Secondary antibody was diluted at 1:20000

This product is suitable for in-vitro studies under the RESEARCH USE ONLY [RUO] licence. This product must not be used as for diagnostic or other medical purposes.
St John's Laboratory Ltd, Knowledge Dock Business Centre, University Way, London, E16 2RD | Tel: 0208 223 3081