

Anti-Acetyl-EP300-Lys1542 antibody (STJ97696)

STJ97696

GENERAL INFORMATION

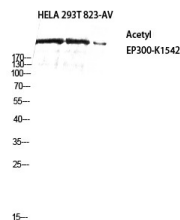
Product Type	Primary antibodies
Short Description	Rabbit polyclonal antibody anti-Acetyl-Histone Acetyltransferase P300-Lys1542 is suitable for use in Western Blot and ELISA research applications.
Applications	WB, ELISA
Host/Source	Rabbit
Reactivity	Human, Mouse, Rat

PRODUCT PROPERTIES

Clonality	Polyclonal
Clone ID	
Concentration	1 mg/mL
Conjugation	Unconjugated
Purification	The antibody was affinity-purified from rabbit anti-serum by affinity-chromatography.
Dilution Range	WB 1:500-1:2000 ELISA 1:10000
Formulation	PBS, 50% Glycerol, 0.5% BSA and 0.02% Sodium Azide.
Isotype	IgG
Storage	Store at -20°C for up to 1 year from the date of receipt, and avoid repeat freeze-thaw cycles.
Instruction	

TARGET INFORMATION

Gene ID	2033
Gene Symbol	EP300
Uniprot ID	EP300_HUMAN
Immunogen	Synthesized acetyl-peptide derived from human p300 around the acetylation site of K1542.
Immunogen Region	
Specificity	Acetyl-EP300-Lys1542 polyclonal antibody (Histone Acetyltransferase P300) binds to endogenous Histone Acetyltransferase P300.
Immunogen Sequence	



Western blot analysis of HELA 293T 823-AV using Acetyl-p300 (K1542) antibody. Antibody was diluted at 1:2000. Secondary antibody was diluted at 1:20000