

Anti-Acetyl-YWHAB-Lys51/49 antibody (STJ97695)

STJ97695

GENERAL INFORMATION

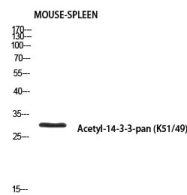
Product Type	Primary antibodies
Short Description	Rabbit polyclonal antibody anti-Acetyl-14-3-3 Protein Beta/Alpha-Lys51/49 is suitable for use in Western Blot and ELISA research applications.
Applications	WB, ELISA
Host/Source	Rabbit
Reactivity	Human, Mouse, Rat

PRODUCT PROPERTIES

Clonality	Polyclonal
Clone ID	
Concentration	1 mg/mL
Conjugation	Unconjugated
Purification	The antibody was affinity-purified from rabbit anti-serum by affinity-chromatography.
Dilution Range	WB 1:500-1:2000 ELISA 1:10000
Formulation	PBS, 50% Glycerol, 0.5% BSA and 0.02% Sodium Azide.
Isotype	IgG
Storage Instruction	Store at -20°C for up to 1 year from the date of receipt, and avoid repeat freeze-thaw cycles.

TARGET INFORMATION

Gene ID	7529
Gene Symbol	YWHAB
Uniprot ID	1433B_HUMAN
Immunogen	Synthesized acetyl-peptide derived from human 14-3-3-pan around the acetylation site of K51.
Immunogen Region	
Specificity	Acetyl-YWHAB-Lys51/49 polyclonal antibody (14-3-3 Protein Beta/Alpha) binds to endogenous 14-3-3 Protein Beta/Alpha.
Immunogen Sequence	



Western blot analysis of mouse spleen using Acetyl-14-3-3-pan (K51/49) antibody. Antibody was diluted at 1:500. Secondary antibody was diluted at 1:20000.

This product is suitable for in-vitro studies under the RESEARCH USE ONLY [RUO] licence. This product must not be used as for diagnostic or other medical purposes.
St John's Laboratory Ltd, Knowledge Dock Business Centre, University Way, London, E16 2RD | Tel: 0208 223 3081