

Anti-Mono-Methyl-TP53-Lys370 antibody (STJ97694)

STJ97694

GENERAL INFORMATION

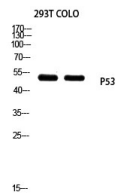
Product Type	Primary antibodies
Short Description	Rabbit polyclonal antibody anti-Mono-Methyl-Cellular Tumor antigen P53-Lys370 is suitable for use in Western Blot and ELISA research applications.
Applications	WB, ELISA
Host/Source	Rabbit
Reactivity	Human, Rat, Mouse

PRODUCT PROPERTIES

Clonality	Polyclonal
Clone ID	
Concentration	1 mg/mL
Conjugation	Unconjugated
Purification	The antibody was affinity-purified from rabbit anti-serum by affinity-chromatography.
Dilution Range	WB 1:500-1:2000 ELISA 1:10000
Formulation	PBS, 50% Glycerol, 0.5% BSA and 0.02% Sodium Azide.
Isotype	IgG
Storage	Store at -20°C for up to 1 year from the date of receipt, and avoid repeat freeze-thaw cycles.
Instruction	

TARGET INFORMATION

Gene ID	7157
Gene Symbol	TP53
Uniprot ID	P53_HUMAN
Immunogen	Synthesized peptide derived from human p53 around the mono-methylation site of K370.
Immunogen Region	
Specificity	Mono-Methyl-TP53-Lys370 polyclonal antibody (Cellular Tumor Antigen P53) binds to endogenous Cellular Tumor Antigen P53.
Immunogen Sequence	



Western blot analysis of 293T COLO using TP53 antibody. Antibody was diluted at 1:1000. Secondary antibody was diluted at 1:20000