

Anti-Phospho-SYN1-Ser553 antibody (STJ97692)

STJ97692

GENERAL INFORMATION

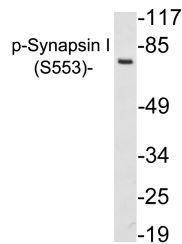
| | |
|--------------------------|--|
| Product Type | Primary antibodies |
| Short Description | Rabbit polyclonal antibody anti-Phospho-Synapsin-1-Ser553 is suitable for use in Western Blot and ELISA research applications. |
| Applications | WB, ELISA |
| Host/Source | Rabbit |
| Reactivity | Human, Mouse, Rat |

PRODUCT PROPERTIES

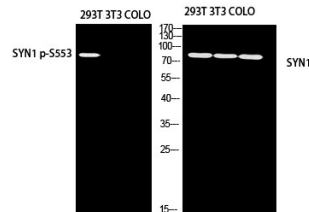
| | |
|----------------------------|--|
| Clonality | Polyclonal |
| Clone ID | |
| Concentration | 1 mg/mL |
| Conjugation | Unconjugated |
| Purification | The antibody was affinity-purified from rabbit anti-serum by affinity-chromatography. |
| Dilution Range | WB 1:500-1:2000 ELISA 1:10000 |
| Formulation | PBS, 50% Glycerol, 0.5% BSA and 0.02% Sodium Azide. |
| Isotype | IgG |
| Storage Instruction | Store at -20°C for up to 1 year from the date of receipt, and avoid repeat freeze-thaw cycles. |

TARGET INFORMATION

| | |
|---------------------------|---|
| Gene ID | 6853 |
| Gene Symbol | SYN1 |
| Uniprot ID | SYN1_HUMAN |
| Immunogen | Synthesized phospho-peptide around the phosphorylation site of human Synapsin-1 (phospho Ser553) |
| Immunogen Region | |
| Specificity | Phospho-SYN1-Ser553 polyclonal antibody (Synapsin-1) binds to endogenous Synapsin-1 only when phosphorylated at Ser553. |
| Immunogen Sequence | |



Western blot analysis of lysates from 293 cells treated with PMA, using p-Synapsin I (Phospho-Ser553) antibody.



Western blot analysis of 293T using SYN1 p-S553 antibody. Antibody was diluted at 1:500

This product is suitable for in-vitro studies under the RESEARCH USE ONLY [RUO] licence. This product must not be used as for diagnostic or other medical purposes.
St John's Laboratory Ltd, Knowledge Dock Business Centre, University Way, London, E16 2RD | Tel: 0208 223 3081