

Anti-Phospho-ATM-Ser1981 antibody (1920-2000) (STJ97691)

STJ97691

GENERAL INFORMATION

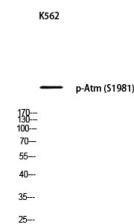
Product Type	Primary antibodies
Short Description	Rabbit polyclonal antibody anti-Phospho-Serine-Protein Kinase Atm-Ser1981 (1920-2000) is suitable for use in Western Blot, Immunohistochemistry, Immunofluorescence and ELISA research applications.
Applications	WB, IHC-P, IF-P, ELISA
Host/Source	Rabbit
Reactivity	Human, Mouse, Rat

PRODUCT PROPERTIES

Clonality	Polyclonal
Clone ID	
Concentration	1 mg/mL
Conjugation	Unconjugated
Purification	The antibody was affinity-purified from rabbit anti-serum by affinity-chromatography.
Dilution	WB 1:500-1:2000
Range	ELISA 1:10000
Formulation	PBS, 50% Glycerol, 0.5% BSA and 0.02% Sodium Azide.
Isotype	IgG
Storage Instruction	Store at -20°C for up to 1 year from the date of receipt, and avoid repeat freeze-thaw cycles.

TARGET INFORMATION

Gene ID	472
Gene Symbol	ATM
Uniprot ID	ATM_HUMAN
Immunogen	Synthesized phospho-peptide around the phosphorylation site of human Atm (phospho Ser1981)
Immunogen Region	1920-2000
Specificity	Phospho-ATM-Ser1981 polyclonal antibody (Serine-Protein Kinase Atm) binds to endogenous Serine-Protein Kinase Atm at the amino acid region 1920-2000 only when phosphorylated at Ser1981.
Immunogen Sequence	



Western blot analysis of K562 using p-Atm (S1981) antibody. Antibody was diluted at 1:500