

Anti-CKLF antibody (103-152 C-Term) (STJ97683)

STJ97683

GENERAL INFORMATION

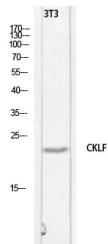
Product Type	Primary antibodies
Short Description	Rabbit polyclonal antibody anti-Chemokine-Like Factor (103-152 C-Term) is suitable for use in Western Blot and ELISA research applications.
Applications	WB, ELISA
Host/Source	Rabbit
Reactivity	Human, Rat, Mouse

PRODUCT PROPERTIES

Clonality	Polyclonal
Clone ID	
Concentration	1 mg/mL
Conjugation	Unconjugated
Purification	The antibody was affinity-purified from rabbit anti-serum by affinity-chromatography.
Dilution Range	WB 1:500-1:2000 ELISA 1:10000
Formulation	PBS, 50% Glycerol, 0.5% BSA and 0.02% Sodium Azide.
Isotype	IgG
Storage Instruction	Store at -20°C for up to 1 year from the date of receipt, and avoid repeat freeze-thaw cycles.

TARGET INFORMATION

Gene ID	51192
Gene Symbol	CKLF
Uniprot ID	CKLF_HUMAN
Immunogen	Synthesized peptide derived from Chemokine-like factor at amino acid range: 103-152
Immunogen Region	103-152 C-Term
Specificity	CKLF polyclonal antibody (Chemokine-Like Factor) binds to endogenous Chemokine-Like Factor at the amino acid region 103-152 C-Term.
Immunogen Sequence	



Western blot analysis of 3T3 lysis using CKLF antibody. Secondary antibody was diluted at 1:20000

This product is suitable for in-vitro studies under the RESEARCH USE ONLY [RUO] licence. This product must not be used as for diagnostic or other medical purposes.
St John's Laboratory Ltd, Knowledge Dock Business Centre, University Way, London, E16 2RD | Tel: 0208 223 3081