

Anti-IL1F10 antibody (101-150 C-Term) (STJ97678)

STJ97678

GENERAL INFORMATION

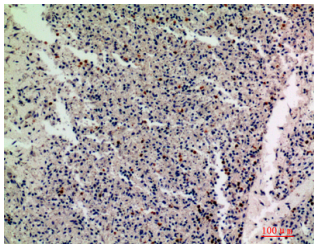
Product Type	Primary antibodies
Short Description	Rabbit polyclonal antibody anti-Interleukin-1 Family Member 10 (101-150 C-Term) is suitable for use in Western Blot, Immunohistochemistry, Immunofluorescence and ELISA research applications.
Applications	WB, IHC-P, IF-P, ELISA
Host/Source	Rabbit
Reactivity	Human, Rat, Mouse

PRODUCT PROPERTIES

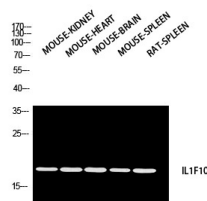
Clonality	Polyclonal
Clone ID	
Concentration	1 mg/mL
Conjugation	Unconjugated
Purification	The antibody was affinity-purified from rabbit anti-serum by affinity-chromatography.
Dilution Range	WB 1:500-1:2000 IHC 1:100-1:300 ELISA 1:10000
Formulation	PBS, 50% Glycerol, 0.5% BSA and 0.02% Sodium Azide.
Isotype	IgG
Storage Instruction	Store at -20°C for up to 1 year from the date of receipt, and avoid repeat freeze-thaw cycles.

TARGET INFORMATION

Gene ID	84639
Gene Symbol	IL1F10
Uniprot ID	IL1FA_HUMAN
Immunogen	Synthesized peptide derived from Interleukin-1 family member 10 at amino acid range: 101-150
Immunogen Region	101-150 C-Term
Specificity	IL1F10 polyclonal antibody (Interleukin-1 Family Member 10) binds to endogenous Interleukin-1 Family Member 10 at the amino acid region 101-150 C-Term.
Immunogen Sequence	



Immunohistochemical analysis of paraffin-embedded human-spleen, antibody was diluted at 1:200



Western blot analysis of mouse kidney, mouse heart, mouse brain, mouse spleen and rat spleen using IL1F10 antibody. Antibody was diluted at 1:2000. Secondary antibody was diluted at 1:20000

This product is suitable for in-vitro studies under the RESEARCH USE ONLY [RUO] licence. This product must not be used as for diagnostic or other medical purposes.
St John's Laboratory Ltd, Knowledge Dock Business Centre, University Way, London, E16 2RD | Tel: 0208 223 3081