

Anti-CCL27 antibody (51-100 Internal) (STJ97677)

STJ97677

GENERAL INFORMATION

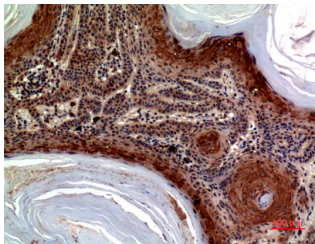
Product Type	Primary antibodies
Short Description	Rabbit polyclonal antibody anti-C-C Motif Chemokine 27 (51-100 Internal) is suitable for use in Western Blot, Immunohistochemistry, Immunofluorescence and ELISA research applications.
Applications	WB, IHC-P, IF-P, ELISA
Host/Source	Rabbit
Reactivity	Human, Rat, Mouse

PRODUCT PROPERTIES

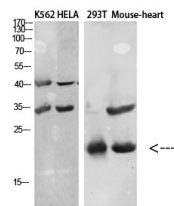
Clonality	Polyclonal
Clone ID	
Concentration	1 mg/mL
Conjugation	Unconjugated
Purification	The antibody was affinity-purified from rabbit anti-serum by affinity-chromatography.
Dilution Range	WB 1:500-1:2000 IHC 1:100-1:300 ELISA 1:10000
Formulation	PBS, 50% Glycerol, 0.5% BSA and 0.02% Sodium Azide.
Isotype	IgG
Storage Instruction	Store at -20°C for up to 1 year from the date of receipt, and avoid repeat freeze-thaw cycles.

TARGET INFORMATION

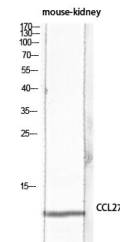
Gene ID	10850
Gene Symbol	CCL27
Uniprot ID	CCL27_HUMAN
Immunogen	Synthesized peptide derived from C-C motif chemokine 27 at amino acid range: 51-100
Immunogen Region	51-100 Internal
Specificity	CCL27 polyclonal antibody (C-C Motif Chemokine 27) binds to endogenous C-C Motif Chemokine 27 at the amino acid region 51-100 Internal.
Immunogen Sequence	



Immunohistochemical analysis of paraffin-embedded human-skin, antibody was diluted at 1:100



Western blot analysis of various cells using Antibody diluted at 1:1000. Secondary antibody was diluted at 1:20000



Western blot analysis of mouse-kidney lysis using CCL27 antibody. Antibody was diluted at 1:1000. Secondary antibody was diluted at 1:20000

This product is suitable for in-vitro studies under the RESEARCH USE ONLY [RUO] licence. This product must not be used as for diagnostic or other medical purposes.
St John's Laboratory Ltd, Knowledge Dock Business Centre, University Way, London, E16 2RD | Tel: 0208 223 3081