

Anti-IL26 antibody (21-70 Internal) (STJ97676)

STJ97676

GENERAL INFORMATION

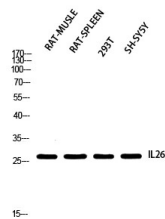
Product Type	Primary antibodies
Short Description	Rabbit polyclonal antibody anti-Interleukin-26 (21-70 Internal) is suitable for use in Western Blot and ELISA research applications.
Applications	WB, ELISA
Host/Source	Rabbit
Reactivity	Human, Rat, Mouse

PRODUCT PROPERTIES

Clonality	Polyclonal
Clone ID	
Concentration	1 mg/mL
Conjugation	Unconjugated
Purification	The antibody was affinity-purified from rabbit anti-serum by affinity-chromatography.
Dilution Range	WB 1:500-1:2000 ELISA 1:10000
Formulation	PBS, 50% Glycerol, 0.5% BSA and 0.02% Sodium Azide.
Isotype	IgG
Storage Instruction	Store at -20°C for up to 1 year from the date of receipt, and avoid repeat freeze-thaw cycles.

TARGET INFORMATION

Gene ID	55801
Gene Symbol	IL26
Uniprot ID	IL26_HUMAN
Immunogen	Synthesized peptide derived from Interleukin-26 at amino acid range: 21-70
Immunogen Region	21-70 Internal
Specificity	IL26 polyclonal antibody (Interleukin-26) binds to endogenous Interleukin-26 at the amino acid region 21-70 Internal.
Immunogen Sequence	



Western blot analysis of RAT-MUSCLE rat spleen 293T SH-SY5Y using IL26 antibody. Antibody was diluted at 1:2000. Secondary antibody was diluted at 1:20000.

This product is suitable for in-vitro studies under the RESEARCH USE ONLY [RUO] licence. This product must not be used as for diagnostic or other medical purposes.
St John's Laboratory Ltd, Knowledge Dock Business Centre, University Way, London, E16 2RD | Tel: 0208 223 3081