

Anti-IL36RN antibody (1-50 Internal) (STJ97673)

STJ97673

GENERAL INFORMATION

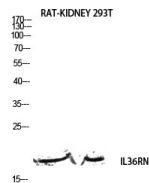
Product Type	Primary antibodies
Short Description	Rabbit polyclonal antibody anti-Interleukin-36 Receptor Antagonist Protein (1-50 Internal) is suitable for use in Western Blot and ELISA research applications.
Applications	WB, ELISA
Host/Source	Rabbit
Reactivity	Human, Mouse, Rat

PRODUCT PROPERTIES

Clonality	Polyclonal
Clone ID	
Concentration	1 mg/mL
Conjugation	Unconjugated
Purification	The antibody was affinity-purified from rabbit anti-serum by affinity-chromatography.
Dilution Range	WB 1:500-1:2000 ELISA 1:10000
Formulation	PBS, 50% Glycerol, 0.5% BSA and 0.02% Sodium Azide.
Isotype	IgG
Storage	Store at -20°C for up to 1 year from the date of receipt, and avoid repeat freeze-thaw cycles.
Instruction	

TARGET INFORMATION

Gene ID	26525
Gene Symbol	IL36RN
Uniprot ID	I36RA_HUMAN
Immunogen	The antiserum was produced against synthesized peptide derived from the Internal region of human IL36RN at amino acid range 1-50
Immunogen Region	1-50 Internal
Specificity	IL36RN polyclonal antibody (Interleukin-36 Receptor Antagonist Protein) binds to endogenous Interleukin-36 Receptor Antagonist Protein at the amino acid region 1-50 Internal.
Immunogen Sequence	



Western blot analysis of RAT-KIDNEY 293T lysis using IL36RN antibody. Antibody was diluted at 1:500. Secondary antibody was diluted at 1:20000