

Anti-LAIR2 antibody (21-70 Internal) (STJ97671)

STJ97671

GENERAL INFORMATION

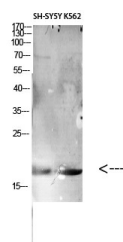
Product Type	Primary antibodies
Short Description	Rabbit polyclonal antibody anti-Leukocyte-Associated Immunoglobulin-Like Receptor 2 (21-70 Internal) is suitable for use in Western Blot and ELISA research applications.
Applications	WB, ELISA
Host/Source	Rabbit
Reactivity	Human, Rat, Mouse

PRODUCT PROPERTIES

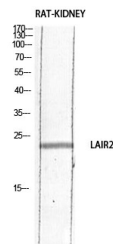
Clonality	Polyclonal
Clone ID	
Concentration	1 mg/mL
Conjugation	Unconjugated
Purification	The antibody was affinity-purified from rabbit anti-serum by affinity-chromatography.
Dilution	WB 1:500-1:2000
Range	ELISA 1:10000
Formulation	PBS, 50% Glycerol, 0.5% BSA and 0.02% Sodium Azide.
Isotype	IgG
Storage	Store at -20°C for up to 1 year from the date of receipt, and avoid repeat freeze-thaw cycles.
Instruction	

TARGET INFORMATION

Gene ID	3904
Gene Symbol	LAIR2
Uniprot ID	LAIR2_HUMAN
Immunogen	The antiserum was produced against synthesized peptide derived from the Internal region of human LAIR2 at amino acid range 21-70
Immunogen Region	21-70 Internal
Specificity	LAIR2 polyclonal antibody (Leukocyte-Associated Immunoglobulin-Like Receptor 2) binds to endogenous Leukocyte-Associated Immunoglobulin-Like Receptor 2 at the amino acid region 21-70 Internal.
Immunogen Sequence	



Western blot analysis of various cells using Antibody diluted at 1:1000. Secondary antibody was diluted at 1:20000



Western blot analysis of RAT-KIDNEY lysis using LAIR2 antibody. Antibody was diluted at 1:1000. Secondary antibody was diluted at 1:20000

This product is suitable for in-vitro studies under the RESEARCH USE ONLY [RUO] licence. This product must not be used as for diagnostic or other medical purposes.
 St John's Laboratory Ltd, Knowledge Dock Business Centre, University Way, London, E16 2RD | Tel: 0208 223 3081