

Anti-ART1 antibody (51-100 Internal) (STJ97670)

STJ97670

GENERAL INFORMATION

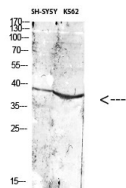
Product Type	Primary antibodies
Short Description	Rabbit polyclonal antibody anti-Gpi-Linked Nad (P (+--Arginine Adp-Ribosyltransferase 1 (51-100 Internal) is suitable for use in Western Blot and ELISA research applications.
Applications	WB, ELISA
Host/Source	Rabbit
Reactivity	Human, Mouse, Rat

PRODUCT PROPERTIES

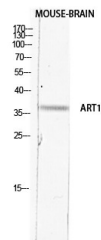
Clonality	Polyclonal
Clone ID	
Concentration	1 mg/mL
Conjugation	Unconjugated
Purification	The antibody was affinity-purified from rabbit anti-serum by affinity-chromatography.
Dilution	WB 1:500-1:2000
Range	ELISA 1:10000
Formulation	PBS, 50% Glycerol, 0.5% BSA and 0.02% Sodium Azide.
Isotype	IgG
Storage	Store at -20°C for up to 1 year from the date of receipt, and avoid repeat freeze-thaw cycles.
Instruction	

TARGET INFORMATION

Gene ID	417
Gene Symbol	ART1
Uniprot ID	NAR1_HUMAN
Immunogen	The antiserum was produced against synthesized peptide derived from the Internal region of human ART1 at amino acid range 51-100
Immunogen Region	51-100 Internal
Specificity	ART1 polyclonal antibody (Gpi-Linked Nad (P (+--Arginine Adp-Ribosyltransferase 1) binds to endogenous Gpi-Linked Nad (P (+--Arginine Adp-Ribosyltransferase 1 at the amino acid region 51-100 Internal.
Immunogen Sequence	



Western blot analysis of various cells using Antibody diluted at 1:1000. Secondary antibody was diluted at 1:20000



Western blot analysis of mouse brain using ART1 antibody. Antibody was diluted at 1:2000. Secondary antibody was diluted at 1:20000