

## Anti-KIR3DL1 antibody (21-70 N-Term) (STJ97669)

STJ97669

### GENERAL INFORMATION

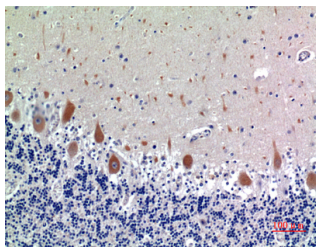
<b>Product Type</b>	Primary antibodies
<b>Short Description</b>	Rabbit polyclonal antibody anti-Killer Cell Immunoglobulin-Like Receptor 3dl1 (21-70 N-Term) is suitable for use in Western Blot, Immunohistochemistry, Immunofluorescence and ELISA research applications.
<b>Applications</b>	WB, IHC-P, IF-P, ELISA
<b>Host/Source</b>	Rabbit
<b>Reactivity</b>	Human, Rat, Mouse

### PRODUCT PROPERTIES

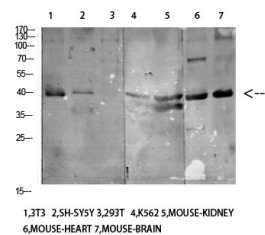
<b>Clonality</b>	Polyclonal
<b>Clone ID</b>	
<b>Concentration</b>	1 mg/mL
<b>Conjugation</b>	Unconjugated
<b>Purification</b>	The antibody was affinity-purified from rabbit anti-serum by affinity-chromatography.
<b>Dilution Range</b>	WB 1:500-1:2000 IHC 1:100-1:300 ELISA 1:10000
<b>Formulation</b>	PBS, 50% Glycerol, 0.5% BSA and 0.02% Sodium Azide.
<b>Isotype</b>	IgG
<b>Storage Instruction</b>	Store at -20°C for up to 1 year from the date of receipt, and avoid repeat freeze-thaw cycles.

### TARGET INFORMATION

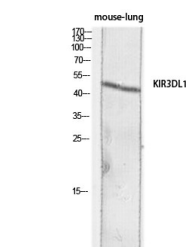
<b>Gene ID</b>	3811
<b>Gene Symbol</b>	KIR3DL1
<b>Uniprot ID</b>	KI3L1_HUMAN
<b>Immunogen</b>	Synthesized peptide derived from Killer cell immunoglobulin-like receptor 3DL1 at amino acid range: 21-70
<b>Immunogen Region</b>	21-70 N-Term
<b>Specificity</b>	KIR3DL1 polyclonal antibody (Killer Cell Immunoglobulin-Like Receptor 3dl1) binds to endogenous Killer Cell Immunoglobulin-Like Receptor 3dl1 at the amino acid region 21-70 N-Term.
<b>Immunogen Sequence</b>	



Immunohistochemical analysis of paraffin-embedded human brain, antibody was diluted at 1:100



Western blot analysis of various cells using Antibody diluted at 1:1000. Secondary antibody was diluted at 1:20000



Western blot analysis of mouse-lung lysis using KIR3DL1 antibody. Antibody was diluted at 1:1000. Secondary antibody was diluted at 1:20000

This product is suitable for in-vitro studies under the RESEARCH USE ONLY [RUO] licence. This product must not be used as for diagnostic or other medical purposes.  
St John's Laboratory Ltd, Knowledge Dock Business Centre, University Way, London, E16 2RD | Tel: 0208 223 3081