

Anti-Cleaved-CASP8-S217 antibody (170-250 Internal) (STJ97641)

STJ97641

GENERAL INFORMATION

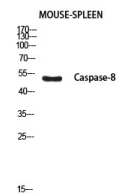
Product Type	Primary antibodies
Short Description	Rabbit polyclonal antibody anti-Cleaved-Caspase-8-S217 (170-250 Internal) is suitable for use in Western Blot and ELISA research applications.
Applications	WB, ELISA
Host/Source	Rabbit
Reactivity	Human, Rat, Mouse

PRODUCT PROPERTIES

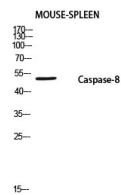
Clonality	Polyclonal
Clone ID	
Concentration	1 mg/mL
Conjugation	Unconjugated
Purification	The antibody was affinity-purified from rabbit anti-serum by affinity-chromatography.
Dilution Range	WB 1:500-1:2000 ELISA 1:10000
Formulation	PBS, 50% Glycerol, 0.5% BSA and 0.02% Sodium Azide.
Isotype	IgG
Storage Instruction	Store at -20°C for up to 1 year from the date of receipt, and avoid repeat freeze-thaw cycles.

TARGET INFORMATION

Gene ID	841
Gene Symbol	CASP8
Uniprot ID	CASP8_HUMAN
Immunogen	Synthesized peptide derived from Cleaved-Caspase-8 p18 (S217). at amino acid range: 170-250
Immunogen Region	170-250 Internal
Specificity	Cleaved-CASP8-S217 polyclonal antibody (Caspase-8) binds to endogenous Caspase-8 at the amino acid region 170-250 Internal.
Immunogen Sequence	



Western blot analysis of mouse spleen using Cleaved-Caspase-8 p18 (S217) antibody. Antibody was diluted at 1:1000. Secondary antibody was diluted at 1:20000



Western blot analysis of mouse spleen using Caspase-8 P18 antibody. Antibody was diluted at 1:1000. Secondary antibody was diluted at 1:20000

This product is suitable for in-vitro studies under the RESEARCH USE ONLY [RUO] licence. This product must not be used as for diagnostic or other medical purposes.
St John's Laboratory Ltd, Knowledge Dock Business Centre, University Way, London, E16 2RD | Tel: 0208 223 3081