

Anti-ANKRD20A1 antibody (Internal) (STJ97634)

STJ97634

GENERAL INFORMATION

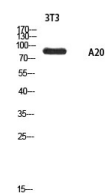
| | |
|--------------------------|---|
| Product Type | Primary antibodies |
| Short Description | Rabbit polyclonal antibody anti-Ankyrin Repeat Domain-Containing Protein 20a1 (Internal) is suitable for use in Western Blot and ELISA research applications. |
| Applications | WB, ELISA |
| Host/Source | Rabbit |
| Reactivity | Human, Rat, Mouse |

PRODUCT PROPERTIES

| | |
|-----------------------|--|
| Clonality | Polyclonal |
| Clone ID | |
| Concentration | 1 mg/mL |
| Conjugation | Unconjugated |
| Purification | The antibody was affinity-purified from rabbit anti-serum by affinity-chromatography. |
| Dilution Range | WB 1:500-1:2000 ELISA 1:10000 |
| Formulation | PBS, 50% Glycerol, 0.5% BSA and 0.02% Sodium Azide. |
| Isotype | IgG |
| Storage | Store at -20°C for up to 1 year from the date of receipt, and avoid repeat freeze-thaw cycles. |
| Instruction | |

TARGET INFORMATION

| | |
|---------------------------|--|
| Gene ID | 84210 |
| Gene Symbol | ANKRD20A1 |
| Uniprot ID | A20A1_HUMAN |
| Immunogen | Synthesized peptide derived from the Internal region of human A20. |
| Immunogen Region | Internal |
| Specificity | ANKRD20A1 polyclonal antibody (Ankyrin Repeat Domain-Containing Protein 20a1) binds to endogenous Ankyrin Repeat Domain-Containing Protein 20a1 at the amino acid region Internal. |
| Immunogen Sequence | |



Western blot analysis of 3T3 using A20 antibody.
Secondary antibody was diluted at 1:20000

This product is suitable for in-vitro studies under the RESEARCH USE ONLY [RUO] licence. This product must not be used as for diagnostic or other medical purposes.
St John's Laboratory Ltd, Knowledge Dock Business Centre, University Way, London, E16 2RD | Tel: 0208 223 3081