

Anti-ACER1 antibody (100-180 Internal) (STJ97625)

STJ97625

GENERAL INFORMATION

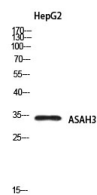
Product Type	Primary antibodies
Short Description	Rabbit polyclonal antibody anti-Alkaline Ceramidase 1 (100-180 Internal) is suitable for use in Western Blot and ELISA research applications.
Applications	WB, ELISA
Host/Source	Rabbit
Reactivity	Human, Rat, Mouse

PRODUCT PROPERTIES

Clonality	Polyclonal
Clone ID	
Concentration	1 mg/mL
Conjugation	Unconjugated
Purification	The antibody was affinity-purified from rabbit anti-serum by affinity-chromatography.
Dilution Range	WB 1:500-1:2000 ELISA 1:10000
Formulation	PBS, 50% Glycerol, 0.5% BSA and 0.02% Sodium Azide.
Isotype	IgG
Storage Instruction	Store at -20°C for up to 1 year from the date of receipt, and avoid repeat freeze-thaw cycles.

TARGET INFORMATION

Gene ID	125981
Gene Symbol	ACER1
Uniprot ID	ACER1_HUMAN
Immunogen	Synthesized peptide derived from ASAH3. at amino acid range: 100-180
Immunogen Region	100-180 Internal
Specificity	ACER1 polyclonal antibody (Alkaline Ceramidase 1) binds to endogenous Alkaline Ceramidase 1 at the amino acid region 100-180 Internal.
Immunogen Sequence	



Western blot analysis of HepG2 using ASAH3 antibody..
Secondary antibody was diluted at 1:20000

This product is suitable for in-vitro studies under the RESEARCH USE ONLY [RUO] licence. This product must not be used as for diagnostic or other medical purposes.
St John's Laboratory Ltd, Knowledge Dock Business Centre, University Way, London, E16 2RD | Tel: 0208 223 3081