

Anti-MRPL35 antibody (80-160 Internal) (STJ97622)

STJ97622

GENERAL INFORMATION

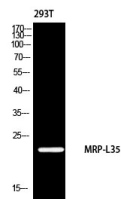
Product Type	Primary antibodies
Short Description	Rabbit polyclonal antibody anti-39s Ribosomal Protein L35-Mitochondrial (80-160 Internal) is suitable for use in Western Blot and ELISA research applications.
Applications	WB, ELISA
Host/Source	Rabbit
Reactivity	Human, Mouse

PRODUCT PROPERTIES

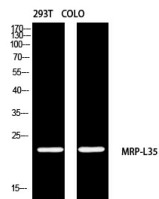
Clonality	Polyclonal
Clone ID	
Concentration	1 mg/mL
Conjugation	Unconjugated
Purification	The antibody was affinity-purified from rabbit anti-serum by affinity-chromatography.
Dilution Range	WB 1:500-1:2000 ELISA 1:10000
Formulation	PBS, 50% Glycerol, 0.5% BSA and 0.02% Sodium Azide.
Isotype	IgG
Storage	Store at -20°C for up to 1 year from the date of receipt, and avoid repeat freeze-thaw cycles.
Instruction	

TARGET INFORMATION

Gene ID	51318
Gene Symbol	MRPL35
Uniprot ID	RM35_HUMAN
Immunogen	Synthesized peptide derived from MRP-L35. at amino acid range: 80-160
Immunogen Region	80-160 Internal
Specificity	MRPL35 polyclonal antibody (39s Ribosomal Protein L35-Mitochondrial) binds to endogenous 39s Ribosomal Protein L35-Mitochondrial at the amino acid region 80-160 Internal.
Immunogen Sequence	



Western blot analysis of 293T using MRP-L35 antibody. Antibody was diluted at 1:2000. Secondary antibody was diluted at 1:20000



Western blot analysis of 293T COLO using MRP-L35 antibody. Antibody was diluted at 1:2000. Secondary antibody was diluted at 1:20000