

## Anti-TOP3A antibody (350-430 Internal) (STJ97619)

STJ97619

### GENERAL INFORMATION

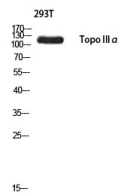
<b>Product Type</b>	Primary antibodies
<b>Short Description</b>	Rabbit polyclonal antibody anti-Dna Topoisomerase 3-Alpha (350-430 Internal) is suitable for use in Western Blot and ELISA research applications.
<b>Applications</b>	WB, ELISA
<b>Host/Source</b>	Rabbit
<b>Reactivity</b>	Human, Mouse

### PRODUCT PROPERTIES

<b>Clonality</b>	Polyclonal
<b>Clone ID</b>	
<b>Concentration</b>	1 mg/mL
<b>Conjugation</b>	Unconjugated
<b>Purification</b>	The antibody was affinity-purified from rabbit anti-serum by affinity-chromatography.
<b>Dilution Range</b>	WB 1:500-1:2000 ELISA 1:10000
<b>Formulation</b>	PBS, 50% Glycerol, 0.5% BSA and 0.02% Sodium Azide.
<b>Isotype</b>	IgG
<b>Storage</b>	Store at -20°C for up to 1 year from the date of receipt, and avoid repeat freeze-thaw cycles.
<b>Instruction</b>	

### TARGET INFORMATION

<b>Gene ID</b>	7156
<b>Gene Symbol</b>	TOP3A
<b>Uniprot ID</b>	TOP3A_HUMAN
<b>Immunogen</b>	Synthesized peptide derived from Topo III Alpha. at amino acid range: 350-430
<b>Immunogen Region</b>	350-430 Internal
<b>Specificity</b>	TOP3A polyclonal antibody (Dna Topoisomerase 3-Alpha) binds to endogenous Dna Topoisomerase 3-Alpha at the amino acid region 350-430 Internal.
<b>Immunogen Sequence</b>	



Western blot analysis of 293T using Topo III Alpha antibody. Antibody was diluted at 1:500. Secondary antibody was diluted at 1:20000 cells nucleus extracted by Minute TM Cytoplasmic and Nuclear Fractionation kit (SC-003, Inventibiotech, MN, USA).