

Anti-LAT antibody (190-270) (STJ97618)

STJ97618

GENERAL INFORMATION

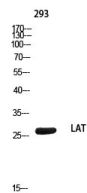
Product Type	Primary antibodies
Short Description	Rabbit polyclonal antibody anti-Linker For Activation Of T-Cells Family Member 1 (190-270) is suitable for use in Western Blot and ELISA research applications.
Applications	WB, ELISA
Host/Source	Rabbit
Reactivity	Human, Mouse, Rat

PRODUCT PROPERTIES

Clonality	Polyclonal
Clone ID	
Concentration	1 mg/mL
Conjugation	Unconjugated
Purification	The antibody was affinity-purified from rabbit anti-serum by affinity-chromatography.
Dilution Range	WB 1:500-1:2000 ELISA 1:10000
Formulation	PBS, 50% Glycerol, 0.5% BSA and 0.02% Sodium Azide.
Isotype	IgG
Storage	Store at -20°C for up to 1 year from the date of receipt, and avoid repeat freeze-thaw cycles.
Instruction	

TARGET INFORMATION

Gene ID	27040
Gene Symbol	LAT
Uniprot ID	LAT_HUMAN
Immunogen	Synthesized peptide derived from LAT. at amino acid range: 190-270
Immunogen Region	190-270
Specificity	LAT polyclonal antibody (Linker For Activation Of T-Cells Family Member 1) binds to endogenous Linker For Activation Of T-Cells Family Member 1 at the amino acid region 190-270.
Immunogen Sequence	



Western blot analysis of 293 using LAT antibody.
Secondary antibody was diluted at 1:20000