

Anti-CDKN2A antibody (90-170) (STJ97617)

STJ97617

GENERAL INFORMATION

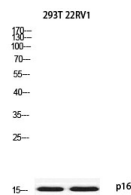
Product Type	Primary antibodies
Short Description	Rabbit polyclonal antibody anti-Cyclin-Dependent Kinase Inhibitor 2a (90-170) is suitable for use in Western Blot and ELISA research applications.
Applications	WB, ELISA
Host/Source	Rabbit
Reactivity	Human, Rat, Mouse

PRODUCT PROPERTIES

Clonality	Polyclonal
Clone ID	
Concentration	1 mg/mL
Conjugation	Unconjugated
Purification	The antibody was affinity-purified from rabbit anti-serum by affinity-chromatography.
Dilution Range	WB 1:500-1:2000 ELISA 1:10000
Formulation	PBS, 50% Glycerol, 0.5% BSA and 0.02% Sodium Azide.
Isotype	IgG
Storage	Store at -20°C for up to 1 year from the date of receipt, and avoid repeat freeze-thaw cycles.
Instruction	

TARGET INFORMATION

Gene ID	1029
Gene Symbol	CDKN2A
Uniprot ID	CDN2A_HUMAN
Immunogen	Synthesized peptide derived from p16. at amino acid range: 90-170
Immunogen Region	90-170
Specificity	CDKN2A polyclonal antibody (Cyclin-Dependent Kinase Inhibitor 2a) binds to endogenous Cyclin-Dependent Kinase Inhibitor 2a at the amino acid region 90-170.
Immunogen Sequence	



Western blot analysis of 293T 22RV1 using p16 antibody. Antibody was diluted at 1:2000. Secondary antibody was diluted at 1:20000