

Anti-ITPR1 antibody (1700-1780) (STJ97616)

STJ97616

GENERAL INFORMATION

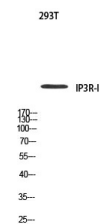
Product Type	Primary antibodies
Short Description	Rabbit polyclonal antibody anti-Inositol 1-4-5-Trisphosphate Receptor Type 1 (1700-1780) is suitable for use in Western Blot and ELISA research applications.
Applications	WB, ELISA
Host/Source	Rabbit
Reactivity	Human, Mouse, Rat

PRODUCT PROPERTIES

Clonality	Polyclonal
Clone ID	
Concentration	1 mg/mL
Conjugation	Unconjugated
Purification	The antibody was affinity-purified from rabbit anti-serum by affinity-chromatography.
Dilution Range	WB 1:500-1:2000 ELISA 1:10000
Formulation	PBS, 50% Glycerol, 0.5% BSA and 0.02% Sodium Azide.
Isotype	IgG
Storage	Store at -20°C for up to 1 year from the date of receipt, and avoid repeat freeze-thaw cycles.
Instruction	

TARGET INFORMATION

Gene ID	3708
Gene Symbol	ITPR1
Uniprot ID	ITPR1_HUMAN
Immunogen	Synthesized peptide derived from IP3R-I. at amino acid range: 1700-1780
Immunogen Region	1700-1780
Specificity	ITPR1 polyclonal antibody (Inositol 1-4-5-Trisphosphate Receptor Type 1) binds to endogenous Inositol 1-4-5-Trisphosphate Receptor Type 1 at the amino acid region 1700-1780.
Immunogen Sequence	



Western blot analysis of 293T using IP3R-I antibody. Antibody was diluted at 1:500. Secondary antibody was diluted at 1:20000