

## Anti-Acetyl-TUBA1B-4A8 antibody [4A8] (STJ97537)

STJ97537

### GENERAL INFORMATION

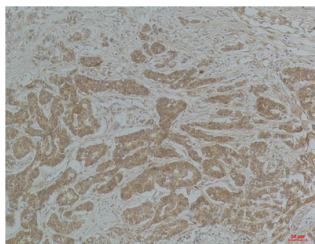
<b>Product Type</b>	Primary antibodies
<b>Short Description</b>	Mouse monoclonal antibody anti-Acetyl-Tubulin Alpha-1b Chain-4A8 is suitable for use in Western Blot, Immunofluorescence, Immunocytochemistry and Immunohistochemistry research applications.
<b>Applications</b>	WB, IF, ICC, IHC-P
<b>Host/Source</b>	Mouse
<b>Reactivity</b>	Human, Rat, Mouse

### PRODUCT PROPERTIES

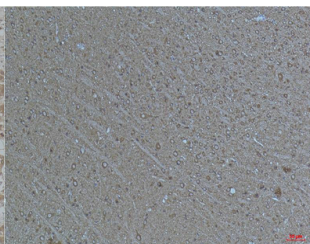
<b>Clonality</b>	Monoclonal
<b>Clone ID</b>	4A8
<b>Concentration</b>	1 mg/mL
<b>Conjugation</b>	Unconjugated
<b>Purification</b>	The antibody was isolated from ascitic fluid by immunoaffinity chromatography using antigens coupled to agarose beads.
<b>Dilution</b>	WB 1:1000-2000
<b>Range</b>	IHC 1:50-100 IF 1:200
<b>Formulation</b>	PBS, 50% Glycerol, 0.5% BSA and 0.02% Sodium Azide.
<b>Isotype</b>	IgG1
<b>Storage Instruction</b>	Store at -20°C for up to 1 year from the date of receipt, and avoid repeat freeze-thaw cycles.

### TARGET INFORMATION

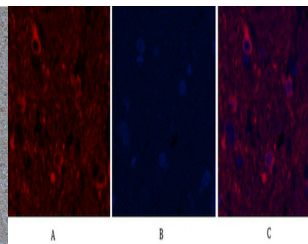
<b>Gene ID</b>	10376
<b>Gene Symbol</b>	TUBA1B
<b>Uniprot ID</b>	TBA1B_HUMAN
<b>Immunogen</b>	Synthetic peptide of Alpha-tubulin (Acetyl Lys40)
<b>Immunogen Region</b>	
<b>Specificity</b>	Acetyl-TUBA1B-4A8 monoclonal antibody (Tubulin Alpha-1b Chain) binds to endogenous Tubulin Alpha-1b Chain.
<b>Immunogen Sequence</b>	



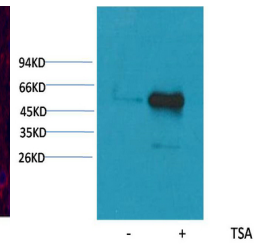
Immunohistochemical analysis of paraffin-embedded Human Breast Carcinoma using anti-tubulin (Acetyl Lys40) Mouse mAb diluted at 1:200.



Immunohistochemical analysis of paraffin-embedded Mouse Brain Tissue using anti-tubulin (Acetyl Lys40) Mouse mAb diluted at 1:200.



Immunofluorescence analysis of Rat-spinal-cord tissue. 1. Alpha-tubulin (Acetyl Lys40) monoclonal antibody (4A8) (red) was diluted at 1:200 (4°C, overnight). 2. Cy3 labeled Secondary antibody was diluted at 1:300 (room temperature, 50min). 3. Picture B: DAPI (blue) 10min. Picture A: Target. Picture B: DAPI. Picture C: merge of A+B



Western blot analysis of extracts from HeLa cells, untreated (-) or treated with TSA (1 μM, 18 hr; +), using Acetyl-α-tubulin (Lys40) Mouse mAb 1:2000.

This product is suitable for in-vitro studies under the RESEARCH USE ONLY [RUO] licence. This product must not be used as for diagnostic or other medical purposes.  
St John's Laboratory Ltd, Knowledge Dock Business Centre, University Way, London, E16 2RD | Tel: 0208 223 3081