

## Anti-PPIB antibody [2B10] (STJ97530)

STJ97530

### GENERAL INFORMATION

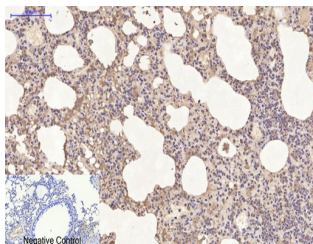
<b>Product Type</b>	Primary antibodies
<b>Short Description</b>	Mouse monoclonal antibody anti-Peptidyl-Prolyl Cis-Trans Isomerase B is suitable for use in Immunofluorescence, Immunocytochemistry, Western Blot and Immunohistochemistry research applications.
<b>Applications</b>	IF, ICC, WB, IHC-P
<b>Host/Source</b>	Mouse
<b>Reactivity</b>	Human, Rat, Mouse

### PRODUCT PROPERTIES

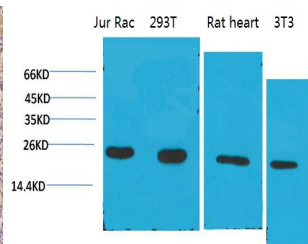
<b>Clonality</b>	Monoclonal
<b>Clone ID</b>	2B10
<b>Concentration</b>	1 mg/mL
<b>Conjugation</b>	Unconjugated
<b>Purification</b>	The antibody was isolated from ascitic fluid by immunoaffinity chromatography using antigens coupled to agarose beads.
<b>Dilution</b>	IF 1:50-200
<b>Range</b>	WB 1:1000-2000 IHC 1:50-300
<b>Formulation</b>	PBS, 50% Glycerol, 0.5% BSA and 0.02% Sodium Azide.
<b>Isotype</b>	IgG1
<b>Storage Instruction</b>	Store at -20°C for up to 1 year from the date of receipt, and avoid repeat freeze-thaw cycles.

### TARGET INFORMATION

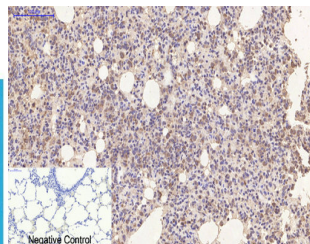
<b>Gene ID</b>	5479
<b>Gene Symbol</b>	PPIB
<b>Uniprot ID</b>	PPIB_HUMAN
<b>Immunogen</b>	Synthetic peptide of Cyclophilin B
<b>Region</b>	
<b>Specificity</b>	PPIB monoclonal antibody (Peptidyl-Prolyl Cis-Trans Isomerase B) binds to endogenous Peptidyl-Prolyl Cis-Trans Isomerase B.
<b>Immunogen Sequence</b>	



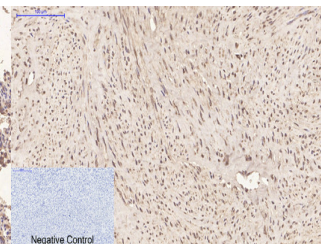
Immunohistochemical analysis of paraffin-embedded Mouse-lung tissue. 1, Cyclophilin B monoclonal antibody (2B10) was diluted at 1:200 (4°C, overnight). 2, Sodium citrate pH 6.0 was used for antibody retrieval (>98°C, 20min). 3, Secondary antibody was diluted at 1:200 (room temperature, 30min). Negative control was used by secondary antibody only.



Western blot analysis of 1) Jurkat, 2) 293T, 3) Rat Liver Tissue, 4) 3T3 with Cyclophilin B Mouse mAb diluted at 1:2,000.



Immunohistochemical analysis of paraffin-embedded Rat-lung tissue. 1, Cyclophilin B monoclonal antibody (2B10) was diluted at 1:200 (4°C, overnight). 2, Sodium citrate pH 6.0 was used for antibody retrieval (>98°C, 20min). 3, Secondary antibody was diluted at 1:200 (room temperature, 30min). Negative control was used by secondary antibody only.



Immunohistochemical analysis of paraffin-embedded Human-uterus tissue. 1, Cyclophilin B monoclonal antibody (2B10) was diluted at 1:200 (4°C, overnight). 2, Sodium citrate pH 6.0 was used for antibody retrieval (>98°C, 20min). 3, Secondary antibody was diluted at 1:200 (room temperature, 30min). Negative control was used by secondary antibody only.

This product is suitable for in-vitro studies under the RESEARCH USE ONLY [RUO] licence. This product must not be used as for diagnostic or other medical purposes.  
St John's Laboratory Ltd, Knowledge Dock Business Centre, University Way, London, E16 2RD | Tel: 0208 223 3081