

Anti-Acetyl-Lysine antibody [10B10] (STJ97466)

STJ97466

GENERAL INFORMATION

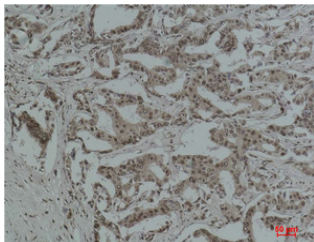
Product Type	Primary antibodies
Short Description	Mouse monoclonal antibody anti-Acetyl-Lysine is suitable for use in Western Blot, Immunohistochemistry, Immunofluorescence and Immunoprecipitation research applications.
Applications	WB, IHC-P, IF-P, IP
Host/Source	Mouse
Reactivity	All

PRODUCT PROPERTIES

Clonality	Monoclonal
Clone ID	10B10
Concentration	
Conjugation	Unconjugated
Purification	The antibody was isolated from ascitic fluid by immunoaffinity chromatography using antigens coupled to agarose beads.
Dilution Range	WB 1:1000-2000 IHC 1:200-500 IP 1:100-200
Formulation	PBS, pH 7.4, 0.5% BSA, 0.02% Sodium Azide and 50% Glycerol.
Isotype	IgG1
Storage Instruction	Store at -20°C for up to 1 year from the date of receipt, and avoid repeat freeze-thaw cycles.

TARGET INFORMATION

Gene ID	
Gene Symbol	
Uniprot ID	
Immunogen	Purified Protein
Immunogen Region	
Specificity	Acetyl-Lysine monoclonal antibody (Lysine) binds to endogenous Lysine.
Immunogen Sequence	



Immunohistochemical analysis of paraffin-embedded Human Breast Carcinoma using Acetyl Lysine monoclonal antibody.



Western blot analysis of 1) Mouse Brain Tissue, 2) HeLa, 3) HeLa+TSA Treated using Acetyl Lysine monoclonal antibody.