

## Anti-MICU1 antibody [Mix] (STJ97447)

STJ97447

### GENERAL INFORMATION

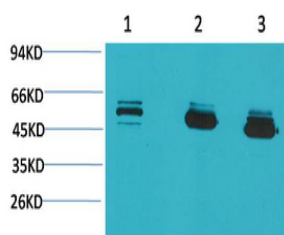
<b>Product Type</b>	Primary antibodies
<b>Short Description</b>	Mouse monoclonal antibody anti-Calcium Uptake Protein 1-Mitochondrial is suitable for use in Western Blot, Immunofluorescence, Immunocytochemistry and Immunohistochemistry research applications.
<b>Applications</b>	WB, IF, ICC, IHC-P
<b>Host/Source</b>	Mouse
<b>Reactivity</b>	Human, Mouse, Rat

### PRODUCT PROPERTIES

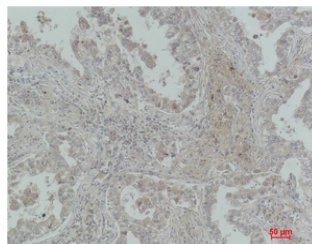
<b>Clonality</b>	Monoclonal
<b>Clone ID</b>	Mix
<b>Concentration</b>	
<b>Conjugation</b>	Unconjugated
<b>Purification</b>	The antibody was isolated from ascitic fluid by immunoaffinity chromatography using antigens coupled to agarose beads.
<b>Dilution</b>	WB 1:1000-2000
<b>Range</b>	IHC 1:100-200 IF 1:200
<b>Formulation</b>	PBS, pH 7.4, 0.5% BSA, 0.02% Sodium Azide and 50% Glycerol.
<b>Isotype</b>	IgG1
<b>Storage Instruction</b>	Store at -20°C for up to 1 year from the date of receipt, and avoid repeat freeze-thaw cycles.

### TARGET INFORMATION

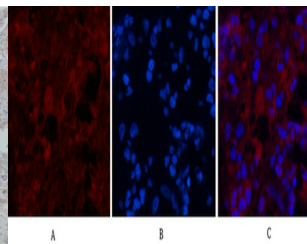
<b>Gene ID</b>	10367
<b>Gene Symbol</b>	MICU1
<b>Uniprot ID</b>	MICU1_HUMAN
<b>Immunogen</b>	Recombinant Protein of MICU1
<b>Region</b>	
<b>Specificity</b>	MICU1 monoclonal antibody (Calcium Uptake Protein 1-Mitochondrial) binds to endogenous Calcium Uptake Protein 1-Mitochondrial.
<b>Immunogen Sequence</b>	



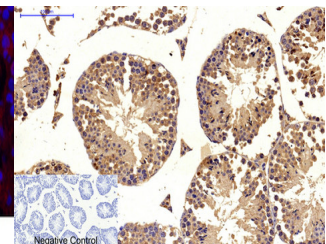
Western blot analysis of 1) MCF7, 2) Mouse Brain Tissue, 3) Rat Brain Tissue using MICU1 monoclonal antibody.



Immunohistochemical analysis of paraffin-embedded Human Lung Carcinoma using MICU1 monoclonal antibody.



Immunofluorescence analysis of Human-appendix tissue. 1. MICU1 monoclonal antibody (Mix) (red) was diluted at 1:200 (4°C, overnight). 2. Cy3 labeled Secondary antibody was diluted at 1:300 (room temperature, 50min). 3. Picture B: DAPI (blue) 10min. Picture A: Target. Picture B: DAPI. Picture C: merge of A+B



Immunohistochemical analysis of paraffin-embedded Mouse-testis tissue. 1. MICU1 monoclonal antibody (Mix) was diluted at 1:200 (4°C, overnight). 2. Sodium citrate pH 6.0 was used for antibody retrieval (>98°C, 20min). 3. Secondary antibody was diluted at 1:200 (room temperature, 30min). Negative control was used by secondary antibody only.

This product is suitable for in-vitro studies under the RESEARCH USE ONLY [RUO] licence. This product must not be used as for diagnostic or other medical purposes.

St John's Laboratory Ltd, Knowledge Dock Business Centre, University Way, London, E16 2RD | Tel: 0208 223 3081