

Anti-Pan-Methyl-Lysine-Mix antibody [Mix] (STJ97446)

STJ97446

GENERAL INFORMATION

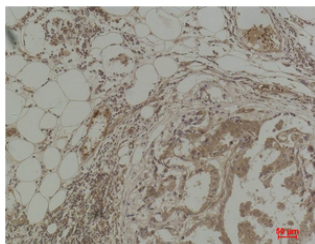
Product Type	Primary antibodies
Short Description	Mouse monoclonal antibody anti-Pan-Methyl-Lysine-Mix is suitable for use in Western Blot, Immunohistochemistry and Immunofluorescence research applications.
Applications	WB, IHC-P, IF-P
Host/Source	Mouse
Reactivity	All

PRODUCT PROPERTIES

Clonality	Monoclonal
Clone ID	Mix
Concentration	
Conjugation	Unconjugated
Purification	The antibody was isolated from ascitic fluid by immunoaffinity chromatography using antigens coupled to agarose beads.
Dilution Range	WB 1:1000-2000 IHC 1:200-500
Formulation	PBS, pH 7.4, 0.5% BSA, 0.02% Sodium Azide and 50% Glycerol.
Isotype	IgG1
Storage	Store at -20°C for up to 1 year from the date of receipt, and avoid repeat freeze-thaw cycles.
Instruction	

TARGET INFORMATION

Gene ID	
Gene Symbol	
Uniprot ID	
Immunogen	Conjugated Protein
Immunogen Region	
Specificity	Pan-Methyl-Lysine-Mix monoclonal antibody (Lysine) binds to endogenous Lysine.
Immunogen Sequence	



Immunohistochemical analysis of paraffin-embedded Human Breast Carcinoma using Pan Methylated Lysine monoclonal antibody.



Western blot analysis of Hela using Pan Methylated Lysine monoclonal antibody.

This product is suitable for in-vitro studies under the RESEARCH USE ONLY [RUO] licence. This product must not be used as for diagnostic or other medical purposes.
St John's Laboratory Ltd, Knowledge Dock Business Centre, University Way, London, E16 2RD | Tel: 0208 223 3081