

Anti-CREB1 antibody (Internal) [4B4] (STJ97445)

STJ97445

GENERAL INFORMATION

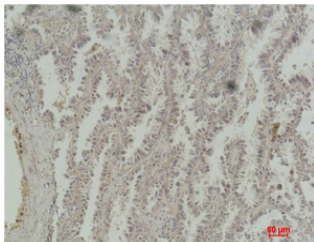
Product Type	Primary antibodies
Short Description	Mouse monoclonal antibody anti-Cyclic Amp-Responsive Element-Binding Protein 1 (Internal) is suitable for use in Western Blot, Immunohistochemistry and Immunofluorescence research applications.
Applications	WB, IHC-P, IF-P
Host/Source	Mouse
Reactivity	Human, Mouse

PRODUCT PROPERTIES

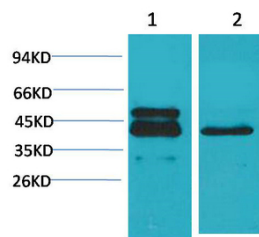
Clonality	Monoclonal
Clone ID	4B4
Concentration	
Conjugation	Unconjugated
Purification	The antibody was isolated from ascitic fluid by immunoaffinity chromatography using antigens coupled to agarose beads.
Dilution	WB 1:500-1000
Range	IHC 1:100-200
Formulation	PBS, pH 7.4, 0.5% BSA, 0.02% Sodium Azide and 50% Glycerol.
Isotype	IgG1
Storage	Store at -20°C for up to 1 year from the date of receipt, and avoid repeat freeze-thaw cycles.
Instruction	

TARGET INFORMATION

Gene ID	1385
Gene Symbol	CREB1
Uniprot ID	CREB1_HUMAN
Immunogen	Recombinant Protein of CREB-1
Immunogen Region	Internal
Specificity	CREB1 monoclonal antibody (Cyclic Amp-Responsive Element-Binding Protein 1) binds to endogenous Cyclic Amp-Responsive Element-Binding Protein 1 at the amino acid region Internal.
Immunogen Sequence	



Immunohistochemical analysis of paraffin-embedded Human Lung Carcinoma using CREB-1 monoclonal antibody.



Western blot analysis of 1) A431, 2) 3T3 using CREB-1 monoclonal antibody.