

Anti-CTNNB1 antibody [4F2] (STJ97420)

STJ97420

GENERAL INFORMATION

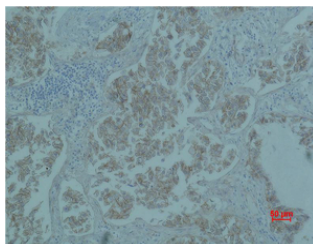
Product Type	Primary antibodies
Short Description	Mouse monoclonal antibody anti-Catenin Beta-1 is suitable for use in Western Blot, Immunofluorescence, Immunocytochemistry and Immunohistochemistry research applications.
Applications	WB, IF, ICC, IHC-P
Host/Source	Mouse
Reactivity	Human, Mouse, Rat

PRODUCT PROPERTIES

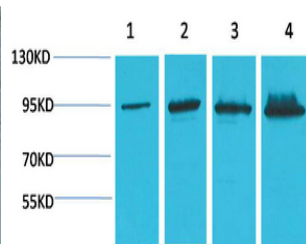
Clonality	Monoclonal
Clone ID	4F2
Concentration	
Conjugation	Unconjugated
Purification	The antibody was isolated from ascitic fluid by immunoaffinity chromatography using antigens coupled to agarose beads.
Dilution Range	WB 1:1000-2000 IHC 1:200-500 IF 1:200
Formulation	PBS, pH 7.4, 0.5% BSA, 0.02% Sodium Azide and 50% Glycerol.
Isotype	IgG1
Storage Instruction	Store at -20°C for up to 1 year from the date of receipt, and avoid repeat freeze-thaw cycles.

TARGET INFORMATION

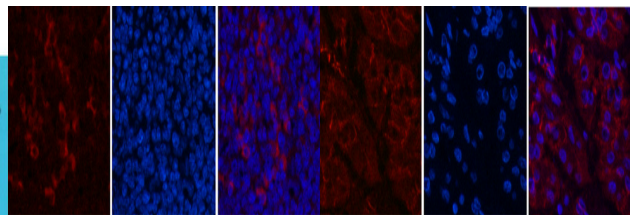
Gene ID	1499
Gene Symbol	CTNNB1
Uniprot ID	CTNB1_HUMAN
Immunogen	Recombinant Protein of Catenin-Beta
Immunogen Region	
Specificity	CTNNB1 monoclonal antibody (Catenin Beta-1) binds to endogenous Catenin Beta-1.
Immunogen Sequence	



Immunohistochemical analysis of paraffin-embedded Human Lung carcinoma using Catenin-Beta monoclonal antibody.



Western blot analysis of 1) HeLa, 2) 293T, 3) Mouse Liver Tissue, 4) Rat Liver Tissue using Catenin-Beta monoclonal antibody.



Immunofluorescence analysis of Mouse-spleen tissue. 1. Catenin-Beta monoclonal antibody (4F2) (red) was diluted at 1:200 (4°C, overnight). 2. Cy3 labeled Secondary antibody was diluted at 1:300 (room temperature, 50min). 3. Picture B: DAPI (blue) 10min. Picture A: Target. Picture B: DAPI. Picture C: merge of A+B

Immunofluorescence analysis of Human-stomach-cancer tissue. 1. Catenin-Beta monoclonal antibody (4F2) (red) was diluted at 1:200 (4°C, overnight). 2. Cy3 labeled Secondary antibody was diluted at 1:300 (room temperature, 50min). 3. Picture B: DAPI (blue) 10min. Picture A: Target. Picture B: DAPI. Picture C: merge of A+B

This product is suitable for in-vitro studies under the RESEARCH USE ONLY [RUO] licence. This product must not be used as for diagnostic or other medical purposes.

St John's Laboratory Ltd, Knowledge Dock Business Centre, University Way, London, E16 2RD | Tel: 0208 223 3081