

Anti-CYCS antibody [4B10] (STJ97419)

STJ97419

GENERAL INFORMATION

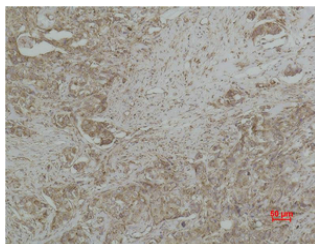
Product Type	Primary antibodies
Short Description	Mouse monoclonal antibody anti-Cytochrome C is suitable for use in Western Blot, Immunofluorescence, Immunocytochemistry and Immunohistochemistry research applications.
Applications	WB, IF, ICC, IHC-P
Host/Source	Mouse
Reactivity	Human, Mouse, Rat, Chicken

PRODUCT PROPERTIES

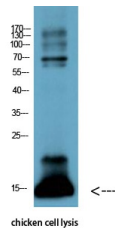
Clonality	Monoclonal
Clone ID	4B10
Concentration	
Conjugation	Unconjugated
Purification	The antibody was isolated from ascitic fluid by immunoaffinity chromatography using antigens coupled to agarose beads.
Dilution Range	WB 1:1000-5000 IHC 1:500-1000 IF 1:200
Formulation	PBS, pH 7.4, 0.5% BSA, 0.02% Sodium Azide and 50% Glycerol.
Isotype	IgG1
Storage Instruction	Store at -20°C for up to 1 year from the date of receipt, and avoid repeat freeze-thaw cycles.

TARGET INFORMATION

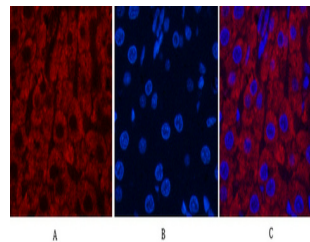
Gene ID	54205
Gene Symbol	CYCS
Uniprot ID	CYC_HUMAN
Immunogen	Recombinant Protein of CYCS
Immunogen Region	
Specificity	CYCS monoclonal antibody (Cytochrome C) binds to endogenous Cytochrome C.
Immunogen Sequence	



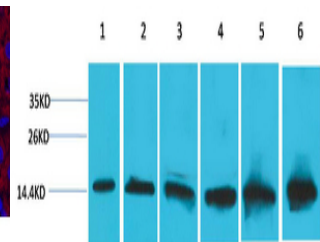
Immunohistochemical analysis of paraffin-embedded human Breast carcinoma using CYCS monoclonal antibody.



Western blot analysis of chicken cell lysis using CYCS monoclonal antibody. Antibody diluted at 1:1000



Immunofluorescence analysis of Rat-liver tissue. 1, CYCS monoclonal antibody (4B10) (red) was diluted at 1:200 (4°C, overnight). 2, Cy3 labeled Secondary antibody was diluted at 1:300 (room temperature, 50min). 3, Picture B: DAPI (blue) 10min. Picture A: Target. Picture B: DAPI. Picture C: merge of A+B



Western blot analysis of 1) HeLa, 2) 293T, 3) 3T3, 4) Mouse Liver Tissue, 5) Rat Liver Tissue, 6) Rat Kidney Tissue using CYCS monoclonal antibody.

This product is suitable for in-vitro studies under the RESEARCH USE ONLY [RUO] licence. This product must not be used as for diagnostic or other medical purposes.
St John's Laboratory Ltd, Knowledge Dock Business Centre, University Way, London, E16 2RD | Tel: 0208 223 3081