

Anti-YWHAE antibody (STJ97372)

STJ97372

GENERAL INFORMATION

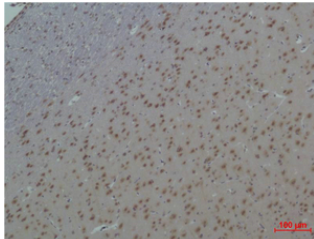
Product Type	Primary antibodies
Short Description	Rabbit polyclonal antibody anti-14-3-3 Protein Epsilon is suitable for use in Western Blot, Immunohistochemistry and Immunofluorescence research applications.
Applications	WB, IHC-P, IF-P
Host/Source	Rabbit
Reactivity	Mouse, Rat

PRODUCT PROPERTIES

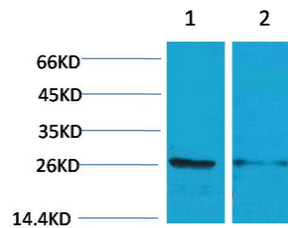
Clonality	Polyclonal
Clone ID	
Concentration	
Conjugation	Unconjugated
Purification	The antibody was affinity-purified from rabbit anti-serum by affinity-chromatography.
Dilution Range	WB 1:1000 IHC 1:200-500
Formulation	PBS, pH 7.4, 0.5% BSA, 0.02% Sodium Azide and 50% Glycerol.
Isotype	IgG
Storage	Store at -20°C for up to 1 year from the date of receipt, and avoid repeat freeze-thaw cycles.
Instruction	

TARGET INFORMATION

Gene ID	7531
Gene Symbol	YWHAE
Uniprot ID	1433E_HUMAN
Immunogen	Recombinant Protein of 14-3-3 Epsilon
Immunogen Region	
Specificity	YWHAE polyclonal antibody (14-3-3 Protein Epsilon) binds to endogenous 14-3-3 Protein Epsilon.
Immunogen Sequence	



Immunohistochemical analysis of paraffin-embedded Rat Brain Tissue using 14-3-3 Epsilon Polyclonal Antibody.



Western blot analysis of 1) Mouse Brain, 2) Rat Brain using 14-3-3 Epsilon Polyclonal Antibody. Secondary antibody was diluted at 1:20000

This product is suitable for in-vitro studies under the RESEARCH USE ONLY [RUO] licence. This product must not be used as for diagnostic or other medical purposes.
St John's Laboratory Ltd, Knowledge Dock Business Centre, University Way, London, E16 2RD | Tel: 0208 223 3081