

Anti-Acetyl-NFE4-Lys43 antibody (STJ97357)

STJ97357

GENERAL INFORMATION

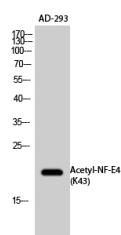
Product Type	Primary antibodies
Short Description	Rabbit polyclonal antibody anti-Acetyl-Transcription Factor Nf-E4-Lys43 is suitable for use in Western Blot and ELISA research applications.
Applications	WB, ELISA
Host/Source	Rabbit
Reactivity	Human, Rat, Mouse

PRODUCT PROPERTIES

Clonality	Polyclonal
Clone ID	
Concentration	1 mg/mL
Conjugation	Unconjugated
Purification	The antibody was affinity-purified from rabbit anti-serum by affinity-chromatography.
Dilution Range	WB 1:500-1:2000 ELISA 1:20000
Formulation	PBS, 50% Glycerol, 0.5% BSA and 0.02% Sodium Azide.
Isotype	IgG
Storage Instruction	Store at -20°C for up to 1 year from the date of receipt, and avoid repeat freeze-thaw cycles.

TARGET INFORMATION

Gene ID	58160
Gene Symbol	NFE4
Uniprot ID	NFE4_HUMAN
Immunogen	Synthesized acetyl-peptide derived from the human NF-E4 around the acetylation site of K43.
Immunogen Region	
Specificity	Acetyl-NF-E4 (K43) Polyclonal AntibodySynthesized peptide derived from the human NF-E4 around the acetylation site of K43.
Immunogen Sequence	



Western blot analysis of AD-293 cells using Acetyl-NF-E4 (K43) Polyclonal Antibody. Secondary antibody was diluted at 1:20000



Western blot analysis of AD-293 cells using Acetyl-NF-E4 (K43) Polyclonal Antibody.. Secondary antibody was diluted at 1:20000

This product is suitable for in-vitro studies under the RESEARCH USE ONLY [RUO] licence. This product must not be used as for diagnostic or other medical purposes.
St John's Laboratory Ltd, Knowledge Dock Business Centre, University Way, London, E16 2RD | Tel: 0208 223 3081