

Anti-GDF7 antibody (321-370 Internal) (STJ97349)

STJ97349

GENERAL INFORMATION

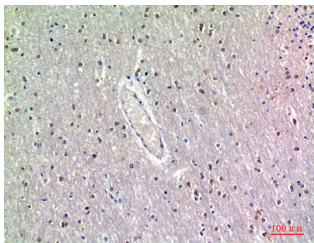
Product Type	Primary antibodies
Short Description	Rabbit polyclonal antibody anti-Growth/Differentiation Factor 7 (321-370 Internal) is suitable for use in Western Blot, Immunohistochemistry, Immunofluorescence and ELISA research applications.
Applications	WB, IHC-P, IF-P, ELISA
Host/Source	Rabbit
Reactivity	Human, Mouse, Rat

PRODUCT PROPERTIES

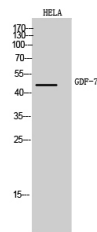
Clonality	Polyclonal
Clone ID	
Concentration	1 mg/mL
Conjugation	Unconjugated
Purification	The antibody was affinity-purified from rabbit anti-serum by affinity-chromatography.
Dilution Range	WB 1:500-1:2000 IHC 1:100-1:300 ELISA 1:10000
Formulation	PBS, 50% Glycerol, 0.5% BSA and 0.02% Sodium Azide.
Isotype	IgG
Storage Instruction	Store at -20°C for up to 1 year from the date of receipt, and avoid repeat freeze-thaw cycles.

TARGET INFORMATION

Gene ID	151449
Gene Symbol	GDF7
Uniprot ID	GDF7_HUMAN
Immunogen	The antiserum was produced against synthesized peptide derived from the Internal region of human GDF7 at amino acid range 321-370
Immunogen Region	321-370 Internal
Specificity	GDF7 polyclonal antibody (Growth/Differentiation Factor 7) binds to endogenous Growth/Differentiation Factor 7 at the amino acid region 321-370 Internal.
Immunogen Sequence	



Immunohistochemical analysis of paraffin-embedded human brain, antibody was diluted at 1:200



Western blot analysis of HeLa cells using GDF-7 Polyclonal Antibody. Antibody was diluted at 1:1000. Secondary antibody was diluted at 1:20000

This product is suitable for in-vitro studies under the RESEARCH USE ONLY [RUO] licence. This product must not be used as for diagnostic or other medical purposes.
St John's Laboratory Ltd, Knowledge Dock Business Centre, University Way, London, E16 2RD | Tel: 0208 223 3081