

Anti-GDF6 antibody (311-360 Internal) (STJ97348)

STJ97348

GENERAL INFORMATION

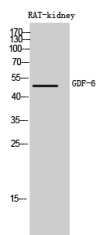
Product Type	Primary antibodies
Short Description	Rabbit polyclonal antibody anti-Growth/Differentiation Factor 6 (311-360 Internal) is suitable for use in Western Blot and ELISA research applications.
Applications	WB, ELISA
Host/Source	Rabbit
Reactivity	Human, Mouse, Rat

PRODUCT PROPERTIES

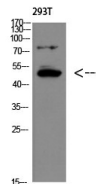
Clonality	Polyclonal
Clone ID	
Concentration	1 mg/mL
Conjugation	Unconjugated
Purification	The antibody was affinity-purified from rabbit anti-serum by affinity-chromatography.
Dilution Range	WB 1:500-1:2000 ELISA 1:10000
Formulation	PBS, 50% Glycerol, 0.5% BSA and 0.02% Sodium Azide.
Isotype	IgG
Storage	Store at -20°C for up to 1 year from the date of receipt, and avoid repeat freeze-thaw cycles.
Instruction	

TARGET INFORMATION

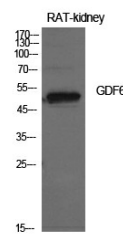
Gene ID	392255
Gene Symbol	GDF6
Uniprot ID	GDF6_HUMAN
Immunogen	The antiserum was produced against synthesized peptide derived from the Internal region of human GDF6 at amino acid range 311-360
Immunogen Region	311-360 Internal
Specificity	GDF6 polyclonal antibody (Growth/Differentiation Factor 6) binds to endogenous Growth/Differentiation Factor 6 at the amino acid region 311-360 Internal.
Immunogen Sequence	



Western blot analysis of RAT-kidney cells using GDF-6 Polyclonal Antibody diluted at 1:500. Secondary antibody was diluted at 1:20000



Western blot analysis of 293T using GDF-6 Polyclonal Antibody diluted at 1:500. Secondary antibody was diluted at 1:20000



Western blot analysis of rat kidney cells using GDF-6 Polyclonal Antibody. Antibody was diluted at 1:500. Secondary antibody was diluted at 1:20000

This product is suitable for in-vitro studies under the RESEARCH USE ONLY [RUO] licence. This product must not be used as for diagnostic or other medical purposes.
St John's Laboratory Ltd, Knowledge Dock Business Centre, University Way, London, E16 2RD | Tel: 0208 223 3081