

Anti-CCL4L1/CCL4L2 antibody (31-80 Internal) (STJ97347)

STJ97347

GENERAL INFORMATION

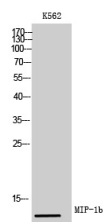
Product Type	Primary antibodies
Short Description	Rabbit polyclonal antibody anti-C-C Motif Chemokine 4-Like (31-80 Internal) is suitable for use in Western Blot and ELISA research applications.
Applications	WB, ELISA
Host/Source	Rabbit
Reactivity	Human, Rat, Mouse

PRODUCT PROPERTIES

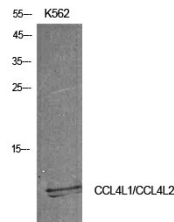
Clonality	Polyclonal
Clone ID	
Concentration	1 mg/mL
Conjugation	Unconjugated
Purification	The antibody was affinity-purified from rabbit anti-serum by affinity-chromatography.
Dilution Range	WB 1:500-1:2000 ELISA 1:10000
Formulation	PBS, 50% Glycerol, 0.5% BSA and 0.02% Sodium Azide.
Isotype	IgG
Storage	Store at 20°C for up to 1 year from the date of receipt, and avoid repeat freeze-thaw cycles.
Instruction	

TARGET INFORMATION

Gene ID	388372/9560
Gene Symbol	CCL4L1.CCL4L2
Uniprot ID	CC4L_HUMAN
Immunogen	The antiserum was produced against synthesized peptide derived from the Internal region of human CCL4L1/CCL4L2 at amino acid range 31-80
Immunogen Region	31-80 Internal
Specificity	CCL4L1/CCL4L2 polyclonal antibody (C-C Motif Chemokine 4-Like) binds to endogenous C-C Motif Chemokine 4-Like at the amino acid region 31-80 Internal.
Immunogen Sequence	



Western blot analysis of K562 cells using MIP-1b Polyclonal Antibody diluted at 1:500. Secondary antibody was diluted at 1:20000



Western blot analysis of K562 cells using MIP-1b Polyclonal Antibody. Antibody was diluted at 1:500. Secondary antibody was diluted at 1:20000

This product is suitable for in-vitro studies under the RESEARCH USE ONLY [RUO] licence. This product must not be used as for diagnostic or other medical purposes.
St John's Laboratory Ltd, Knowledge Dock Business Centre, University Way, London, E16 2RD | Tel: 0208 223 3081