

Anti-BMP2 antibody (341-390 C-Term) (STJ97346)

STJ97346

GENERAL INFORMATION

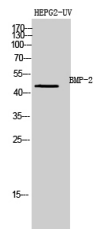
Product Type	Primary antibodies
Short Description	Rabbit polyclonal antibody anti-Bone Morphogenetic Protein 2 (341-390 C-Term) is suitable for use in Immunofluorescence, Immunocytochemistry, Western Blot, Immunohistochemistry and ELISA research applications.
Applications	IF, ICC, WB, IHC-P, ELISA
Host/Source	Rabbit
Reactivity	Human, Mouse, Rat

PRODUCT PROPERTIES

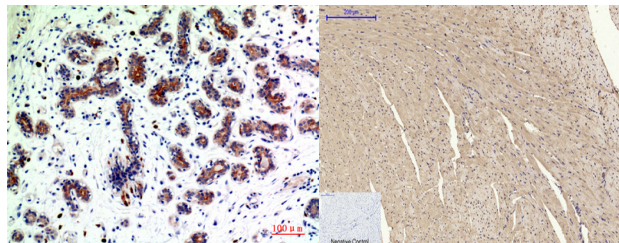
Clonality	Polyclonal
Clone ID	
Concentration	1 mg/mL
Conjugation	Unconjugated
Purification	The antibody was affinity-purified from rabbit anti-serum by affinity-chromatography.
Dilution	IF 1:50-200
Range	WB 1:500-1:2000 IHC 1:100-1:300 ELISA 1:10000
Formulation	PBS, 50% Glycerol, 0.5% BSA and 0.02% Sodium Azide.
Isotype	IgG
Storage Instruction	Store at -20°C for up to 1 year from the date of receipt, and avoid repeat freeze-thaw cycles.

TARGET INFORMATION

Gene ID	650
Gene Symbol	BMP2
Uniprot ID	BMP2_HUMAN
Immunogen	Synthesized peptide derived from Bone morphogenetic protein 2 at amino acid range: 341-390
Immunogen Region	341-390 C-Term
Specificity	BMP2 polyclonal antibody (Bone Morphogenetic Protein 2) binds to endogenous Bone Morphogenetic Protein 2 at the amino acid region 341-390 C-Term.
Immunogen Sequence	

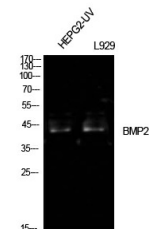


Western blot analysis of HEPG2-UV cells using BMP-2 Polyclonal Antibody diluted at 1: 1000. Secondary antibody was diluted at 1:20000



Immunohistochemical analysis of paraffin-embedded human-breast-cancer, antibody was diluted at 1:200

Immunohistochemical analysis of paraffin-embedded Mouse-heart tissue. 1. BMP-2 Polyclonal Antibody was diluted at 1:200 (4°C, overnight). 2. Sodium citrate pH 6.0 was used for antibody retrieval (>98°C, 20min). 3. Secondary antibody was diluted at 1:200 (room temperature, 30min). Negative control was used by secondary antibody only.



Western blot analysis of HepG2-UV, L929 cells using BMP-2 Polyclonal Antibody. Antibody was diluted at 1:1000. Secondary antibody was diluted at 1:20000

This product is suitable for in-vitro studies under the RESEARCH USE ONLY [RUO] licence. This product must not be used as for diagnostic or other medical purposes.
St John's Laboratory Ltd, Knowledge Dock Business Centre, University Way, London, E16 2RD | Tel: 0208 223 3081