

## Anti-GDF3 antibody (311-360 C-Term) (STJ97341)

STJ97341

### GENERAL INFORMATION

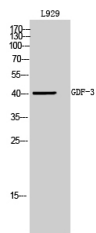
<b>Product Type</b>	Primary antibodies
<b>Short Description</b>	Rabbit polyclonal antibody anti-Growth/Differentiation Factor 3 (311-360 C-Term) is suitable for use in Western Blot and ELISA research applications.
<b>Applications</b>	WB, ELISA
<b>Host/Source</b>	Rabbit
<b>Reactivity</b>	Human, Rat, Mouse

### PRODUCT PROPERTIES

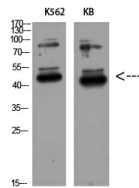
<b>Clonality</b>	Polyclonal
<b>Clone ID</b>	
<b>Concentration</b>	1 mg/mL
<b>Conjugation</b>	Unconjugated
<b>Purification</b>	The antibody was affinity-purified from rabbit anti-serum by affinity-chromatography.
<b>Dilution Range</b>	WB 1:500-1:2000 ELISA 1:10000
<b>Formulation</b>	PBS, 50% Glycerol, 0.5% BSA and 0.02% Sodium Azide.
<b>Isotype</b>	IgG
<b>Storage</b>	Store at -20°C for up to 1 year from the date of receipt, and avoid repeat freeze-thaw cycles.
<b>Instruction</b>	

### TARGET INFORMATION

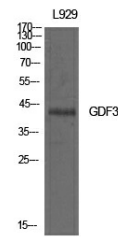
<b>Gene ID</b>	9573
<b>Gene Symbol</b>	GDF3
<b>Uniprot ID</b>	GDF3_HUMAN
<b>Immunogen</b>	Synthesized peptide derived from Growth/differentiation factor 3 at amino acid range: 311-360
<b>Immunogen Region</b>	311-360 C-Term
<b>Specificity</b>	GDF3 polyclonal antibody (Growth/Differentiation Factor 3) binds to endogenous Growth/Differentiation Factor 3 at the amino acid region 311-360 C-Term.
<b>Immunogen Sequence</b>	



Western blot analysis of L929 cells using GDF-3 Polyclonal Antibody diluted at 1: 500. Secondary antibody was diluted at 1:20000



Western blot analysis of K562 KB using GDF-3 Polyclonal Antibody diluted at 1:500. Secondary antibody was diluted at 1:20000



Western blot analysis of L929 cells using GDF-3 Polyclonal Antibody. Antibody was diluted at 1:500. Secondary antibody was diluted at 1:20000

This product is suitable for in-vitro studies under the RESEARCH USE ONLY [RUO] licence. This product must not be used as for diagnostic or other medical purposes.  
St John's Laboratory Ltd, Knowledge Dock Business Centre, University Way, London, E16 2RD | Tel: 0208 223 3081