

Anti-MRC1 antibody (341-390 Internal) (STJ97335)

STJ97335

GENERAL INFORMATION

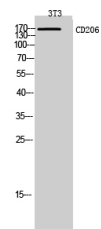
Product Type	Primary antibodies
Short Description	Rabbit polyclonal antibody anti-Macrophage Mannose Receptor 1 (341-390 Internal) is suitable for use in Western Blot, Immunohistochemistry, Immunofluorescence and ELISA research applications.
Applications	WB, IHC-P, IF-P, ELISA
Host/Source	Rabbit
Reactivity	Human, Mouse

PRODUCT PROPERTIES

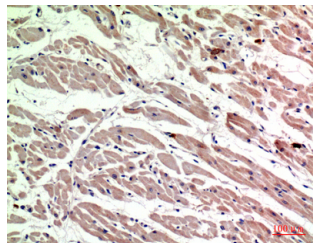
Clonality	Polyclonal
Clone ID	
Concentration	1 mg/mL
Conjugation	Unconjugated
Purification	The antibody was affinity-purified from rabbit anti-serum by affinity-chromatography.
Dilution Range	WB 1:500-1:2000 IHC 1:100-1:300 ELISA 1:10000
Formulation	PBS, 50% Glycerol, 0.5% BSA and 0.02% Sodium Azide.
Isotype	IgG
Storage Instruction	Store at -20°C for up to 1 year from the date of receipt, and avoid repeat freeze-thaw cycles.

TARGET INFORMATION

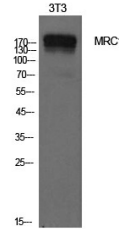
Gene ID	4360
Gene Symbol	MRC1
Uniprot ID	MRC1_HUMAN
Immunogen	The antiserum was produced against synthesized peptide derived from the Internal region of human MRC1 at amino acid range 341-390
Immunogen Region	341-390 Internal
Specificity	MRC1 polyclonal antibody (Macrophage Mannose Receptor 1) binds to endogenous Macrophage Mannose Receptor 1 at the amino acid region 341-390 Internal.
Immunogen Sequence	



Western blot analysis of 3T3 cells using CD206 Polyclonal Antibody. Secondary antibody was diluted at 1:20000



Immunohistochemical analysis of paraffin-embedded human heart, antibody was diluted at 1:200



Western blot analysis of NIH-3T3 cells using MRC1 Polyclonal Antibody. Secondary antibody was diluted at 1:20000

This product is suitable for in-vitro studies under the RESEARCH USE ONLY [RUO] licence. This product must not be used as for diagnostic or other medical purposes.
St John's Laboratory Ltd, Knowledge Dock Business Centre, University Way, London, E16 2RD | Tel: 0208 223 3081