

Anti-ENPEP antibody (671-720 Internal) (STJ97334)

STJ97334

GENERAL INFORMATION

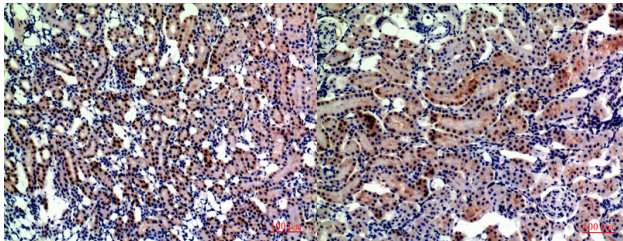
Product Type	Primary antibodies
Short Description	Rabbit polyclonal antibody anti-Glutamyl Aminopeptidase (671-720 Internal) is suitable for use in Western Blot, Immunohistochemistry, Immunofluorescence and ELISA research applications.
Applications	WB, IHC-P, IF-P, ELISA
Host/Source	Rabbit
Reactivity	Human, Mouse, Rat

PRODUCT PROPERTIES

Clonality	Polyclonal
Clone ID	
Concentration	1 mg/mL
Conjugation	Unconjugated
Purification	The antibody was affinity-purified from rabbit anti-serum by affinity-chromatography.
Dilution Range	WB 1:500-1:2000 IHC 1:100-1:300 ELISA 1:10000
Formulation	PBS, 50% Glycerol, 0.5% BSA and 0.02% Sodium Azide.
Isotype	IgG
Storage Instruction	Store at -20°C for up to 1 year from the date of receipt, and avoid repeat freeze-thaw cycles.

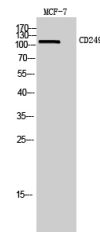
TARGET INFORMATION

Gene ID	2028
Gene Symbol	ENPEP
Uniprot ID	AMPE_HUMAN
Immunogen	The antiserum was produced against synthesized peptide derived from the Internal region of human ENPEP at amino acid range 671-720
Immunogen Region	671-720 Internal
Specificity	ENPEP polyclonal antibody (Glutamyl Aminopeptidase) binds to endogenous Glutamyl Aminopeptidase at the amino acid region 671-720 Internal.
Immunogen Sequence	



Immunohistochemical analysis of paraffin-embedded rat-kidney, antibody was diluted at 1:200

Immunohistochemical analysis of paraffin-embedded rat-kidney, antibody was diluted at 1:200



Western blot analysis of MCF7 cells using CD249 Polyclonal Antibody. Secondary antibody was diluted at 1:20000

This product is suitable for in-vitro studies under the RESEARCH USE ONLY [RUO] licence. This product must not be used as for diagnostic or other medical purposes.
St John's Laboratory Ltd, Knowledge Dock Business Centre, University Way, London, E16 2RD | Tel: 0208 223 3081