

Anti-PTGFRN antibody (601-650 Internal) (STJ97332)

STJ97332

GENERAL INFORMATION

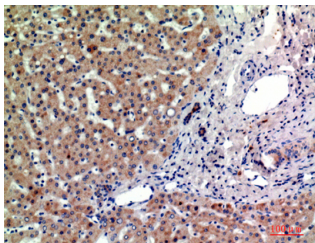
Product Type	Primary antibodies
Short Description	Rabbit polyclonal antibody anti-Prostaglandin F2 Receptor Negative Regulator (601-650 Internal) is suitable for use in Western Blot, Immunohistochemistry, Immunofluorescence and ELISA research applications.
Applications	WB, IHC-P, IF-P, ELISA
Host/Source	Rabbit
Reactivity	Human, Mouse, Rat

PRODUCT PROPERTIES

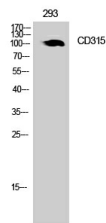
Clonality	Polyclonal
Clone ID	
Concentration	1 mg/mL
Conjugation	Unconjugated
Purification	The antibody was affinity-purified from rabbit anti-serum by affinity-chromatography.
Dilution Range	WB 1:500-1:2000 IHC 1:100-1:300 ELISA 1:10000
Formulation	PBS, 50% Glycerol, 0.5% BSA and 0.02% Sodium Azide.
Isotype	IgG
Storage Instruction	Store at -20°C for up to 1 year from the date of receipt, and avoid repeat freeze-thaw cycles.

TARGET INFORMATION

Gene ID	5738
Gene Symbol	PTGFRN
Uniprot ID	FPRP_HUMAN
Immunogen	The antiserum was produced against synthesized peptide derived from the Internal region of human PTGFRN at amino acid range 601-650
Immunogen Region	601-650 Internal
Specificity	PTGFRN polyclonal antibody (Prostaglandin F2 Receptor Negative Regulator) binds to endogenous Prostaglandin F2 Receptor Negative Regulator at the amino acid region 601-650 Internal.
Immunogen Sequence	



Immunohistochemical analysis of paraffin-embedded human liver, antibody was diluted at 1:200



Western blot analysis of 293 cells using CD315 Polyclonal Antibody. Secondary antibody was diluted at 1:20000

This product is suitable for in-vitro studies under the RESEARCH USE ONLY [RUO] licence. This product must not be used as for diagnostic or other medical purposes.
St John's Laboratory Ltd, Knowledge Dock Business Centre, University Way, London, E16 2RD | Tel: 0208 223 3081