

Anti-CD300LD antibody (61-110 Internal) (STJ97331)

STJ97331

GENERAL INFORMATION

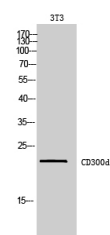
Product Type	Primary antibodies
Short Description	Rabbit polyclonal antibody anti-Cmrf35-Like Molecule 5 (61-110 Internal) is suitable for use in Western Blot and ELISA research applications.
Applications	WB, ELISA
Host/Source	Rabbit
Reactivity	Human, Rat, Mouse

PRODUCT PROPERTIES

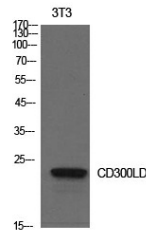
Clonality	Polyclonal
Clone ID	
Concentration	1 mg/mL
Conjugation	Unconjugated
Purification	The antibody was affinity-purified from rabbit anti-serum by affinity-chromatography.
Dilution Range	WB 1:500-1:2000 ELISA 1:10000
Formulation	PBS, 50% Glycerol, 0.5% BSA and 0.02% Sodium Azide.
Isotype	IgG
Storage Instruction	Store at -20°C for up to 1 year from the date of receipt, and avoid repeat freeze-thaw cycles.

TARGET INFORMATION

Gene ID	100131439
Gene Symbol	CD300LD
Uniprot ID	CLM5_HUMAN
Immunogen	The antiserum was produced against synthesized peptide derived from the Internal region of human CD300LD at amino acid range 61-110
Immunogen Region	61-110 Internal
Specificity	CD300LD polyclonal antibody (Cmrf35-Like Molecule 5) binds to endogenous Cmrf35-Like Molecule 5 at the amino acid region 61-110 Internal.
Immunogen Sequence	



Western blot analysis of 3T3 cells using CD300d Polyclonal Antibody. Secondary antibody was diluted at 1:20000



Western blot analysis of NIH-3T3 cells using CD300LD Polyclonal Antibody. Secondary antibody was diluted at 1:20000

This product is suitable for in-vitro studies under the RESEARCH USE ONLY [RUO] licence. This product must not be used as for diagnostic or other medical purposes.
St John's Laboratory Ltd, Knowledge Dock Business Centre, University Way, London, E16 2RD | Tel: 0208 223 3081